



Datasheet for ABIN6743973  
**anti-PAFAH1B1 antibody (AA 71-120)**



[Go to Product page](#)

1 Image

Overview

Quantity:	100 µL
Target:	PAFAH1B1
Binding Specificity:	AA 71-120
Reactivity:	Human, Rat, Mouse, Dog, Cow, Horse, Pig, Rabbit, Guinea Pig, Chicken, Hamster, Monkey, Bat
Host:	Rabbit
Clonality:	Polyclonal
Conjugate:	This PAFAH1B1 antibody is un-conjugated
Application:	Western Blotting (WB)

Product Details

Immunogen:	Synthetic peptide located between aa71-120 of human PAFAH1B1 (P43034, NP_000421). Percent identity by BLAST analysis: Human, Chimpanzee, Orangutan, Gibbon, Monkey, Galago, Marmoset, Mouse, Rat, Hamster, Elephant, Dog, Cat, Bovine, Bat, Rabbit, Horse, Pig, Opossum, Guinea pig, Turkey, Zebra finch, Chicken, Platypus (100%), Gorilla, Xenopus (92%), Catfish, Zebrafish (91%), Salmon, Pufferfish (83%).  Type of Immunogen: Synthetic peptide
Specificity:	Human PAFAH1B1 / LIS1
Predicted Reactivity:	Percent identity by BLAST analysis: Human, Mouse, Dog, Bovine, Rabbit, Horse (100%).
Purification:	Immunoaffinity purified

## Target Details

---

Target:	PAFAH1B1
Alternative Name:	PAFAH1B1 / LIS1 ( <a href="#">PAFAH1B1 Products</a> )
Background:	Name/Gene ID: PAFAH1B1  Synonyms: PAFAH1B1, LIS-1, LIS2, Lissencephaly 1 protein, Lissencephaly-1 protein, MDCR, MDS, PAFAHA, PAF-AH alpha, PAFAH, LIS1, PAF-AH 45 kDa subunit, PAFAH alpha
Gene ID:	5048
NCBI Accession:	<a href="#">NP_000421</a>
UniProt:	<a href="#">P43034</a>
Pathways:	<a href="#">M Phase</a> , <a href="#">Regulation of Cell Size</a>

## Application Details

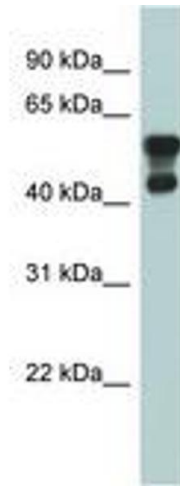
---

Application Notes:	Approved: WB (0.2 - 1 µg/mL)  Usage: Western Blot: Suggested dilution at 1 µg/mL in 5 % skim milk / PBS buffer, and HRP conjugated anti-Rabbit IgG should be diluted in 1: 50,000 - 100,000 as secondary antibody.
Comment:	Target Species of Antibody: Human
Restrictions:	For Research Use only

## Handling

---

Format:	Lyophilized
Reconstitution:	Distilled water
Concentration:	Lot specific
Buffer:	Lyophilized from PBS with 2 % sucrose
Handling Advice:	Avoid repeat freeze-thaw cycles.
Storage:	4 °C,-20 °C
Storage Comment:	Long term: -20°C, the use of 50% glycerol is recommended if storing aliquots in -20°C for long term use (up to 1 year)  Short term (less than 1 week): 4°C. Avoid freeze-thaw cycles.



**Image 1.**