

Datasheet for ABIN6743977
anti-PMS2 antibody (AA 611-660)



[Go to Product page](#)

1 Image

Overview

Quantity:	100 µL
Target:	PMS2
Binding Specificity:	AA 611-660
Reactivity:	Human, Cow, Guinea Pig, Monkey, Pig
Host:	Rabbit
Clonality:	Polyclonal
Conjugate:	This PMS2 antibody is un-conjugated
Application:	Western Blotting (WB)

Product Details

Immunogen:	Synthetic peptide located between aa611-660 of human PMS2 (P54278, NP_000526). Percent identity by BLAST analysis: Human, Chimpanzee, Gibbon, Marmoset, Pig, Guinea pig (100%), Gorilla, Dog (92%), Bat, Rabbit, Horse (91%), Rat, Opossum, Turkey, Chicken, Platypus (90%), Galago (85%), Bovine (84%). Type of Immunogen: Synthetic peptide
Specificity:	Human PMS2
Predicted Reactivity:	Percent identity by BLAST analysis: Human, Pig, Guinea pig (100%) Dog (92%) Rabbit, Horse (91%) Rat, Chicken (90%) Bovine (84%).
Purification:	Immunoaffinity purified

Target Details

Target:	PMS2
Alternative Name:	PMS2 (PMS2 Products)
Background:	Name/Gene ID: PMS2 Synonyms: PMS2, HNPCC4, HLDJ0042M02.9, PMS2CL, PMSL2, PMS1 protein homolog 2
Gene ID:	5395
NCBI Accession:	NP_000526
UniProt:	P54278
Pathways:	DNA Damage Repair , Production of Molecular Mediator of Immune Response

Application Details

Application Notes:	Approved: WB (0.2 - 1 µg/mL) Usage: Western Blot: Suggested dilution at 1 µg/mL in 5 % skim milk / PBS buffer, and HRP conjugated anti-Rabbit IgG should be diluted in 1: 50,000 - 100,000 as secondary antibody. Not recommended for: IHC-P
Comment:	Target Species of Antibody: Human
Restrictions:	For Research Use only

Handling

Format:	Lyophilized
Reconstitution:	Distilled water
Concentration:	Lot specific
Buffer:	Lyophilized from PBS with 2 % sucrose
Handling Advice:	Avoid repeat freeze-thaw cycles.
Storage:	4 °C, -20 °C
Storage Comment:	Long term: -20°C, the use of 50% glycerol is recommended if storing aliquots in -20°C for long term use (up to 1 year) Short term (less than 1 week): 4°C. Avoid freeze-thaw cycles.

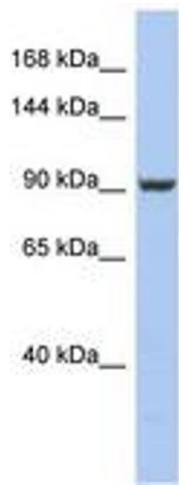


Image 1.