



[Go to Product page](#)

Datasheet for ABIN6743979
anti-BLVRB antibody (C-Term)

1 Image

Overview

Quantity:	100 µL
Target:	BLVRB
Binding Specificity:	C-Term
Reactivity:	Human, Mouse, Rat, Horse, Monkey, Dog, Guinea Pig
Host:	Rabbit
Clonality:	Polyclonal
Conjugate:	This BLVRB antibody is un-conjugated
Application:	Western Blotting (WB)

Product Details

Immunogen:	Synthetic peptide from C-Terminus of human BLVRB (P30043, NP_000704). Percent identity by BLAST analysis: Human, Chimpanzee, Gorilla, Gibbon, Galago, Marmoset, Mouse, Rat, Elephant, Dog, Opossum, Guinea pig (100%), Bovine, Rabbit (92%), Horse (85%). Type of Immunogen: Synthetic peptide
Specificity:	Human BLVRB / GHBP
Predicted Reactivity:	Percent identity by BLAST analysis: Human, Mouse, Rat, Dog (100%) Bovine, Rabbit (92%) Horse (85%).
Purification:	Immunoaffinity purified

Target Details

Target:	BLVRB
Alternative Name:	GHBP / BLVRB (BLVRB Products)
Background:	Name/Gene ID: BLVRB Synonyms: BLVRB, Biliverdin-IX beta-reductase, BVR-B, Flavin reductase (NADPH), Green heme-binding protein, Flavin reductase, FR, SDR43U1, NADPH-dependent diaphorase, NADPH-flavin reductase, Biliverdin reductase B, BVRB, FLR, GHBP
Gene ID:	645
NCBI Accession:	NP_000704
UniProt:	P30043

Application Details

Application Notes:	Approved: WB (0.2 - 1 µg/mL) Usage: Western Blot: Suggested dilution at 1 µg/mL in 5 % skim milk / PBS buffer, and HRP conjugated anti-Rabbit IgG should be diluted in 1: 50,000 - 100,000 as secondary antibody.
Comment:	Target Species of Antibody: Human
Restrictions:	For Research Use only

Handling

Format:	Lyophilized
Reconstitution:	Distilled water
Concentration:	Lot specific
Buffer:	Lyophilized from PBS with 2 % sucrose
Handling Advice:	Avoid repeat freeze-thaw cycles.
Storage:	4 °C, -20 °C
Storage Comment:	Long term: -20°C, the use of 50% glycerol is recommended if storing aliquots in -20°C for long term use (up to 1 year) Short term (less than 1 week): 4°C. Avoid freeze-thaw cycles.

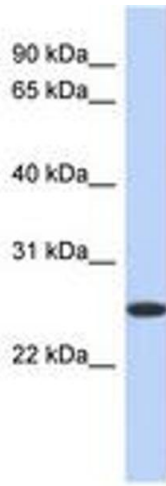


Image 1.