



Datasheet for ABIN6743990  
**anti-MTHFD2L antibody (AA 201-250)**



[Go to Product page](#)

1 Image

Overview

Quantity:	100 µL
Target:	MTHFD2L
Binding Specificity:	AA 201-250
Reactivity:	Human, Mouse, Rat, Cow, Dog, Horse, Pig, Rabbit, Chicken
Host:	Rabbit
Clonality:	Polyclonal
Conjugate:	This MTHFD2L antibody is un-conjugated
Application:	Western Blotting (WB)

Product Details

Immunogen:	Synthetic peptide located between aa201-250 of human MTHFD2L (Q9H903, NP_001138450). Percent identity by BLAST analysis: Human, Chimpanzee, Gorilla, Gibbon, Marmoset, Mouse, Rat, Dog, Bovine, Rabbit, Horse, Pig, Opossum, Turkey, Chicken, Lizard (100%), Monkey, Galago, Hamster, Elephant, Panda, Bat, Guinea pig, Xenopus, Smelt, Stickleback, Zebrafish (92%), Zebra finch, Platypus, Salmon (85%).  Type of Immunogen: Synthetic peptide
Specificity:	Human MTHFD2L
Predicted Reactivity:	Percent identity by BLAST analysis: Human, Dog, Bovine, Rabbit, Pig, Chicken (100%).
Purification:	Immunoaffinity purified

## Target Details

---

Target:	MTHFD2L
Alternative Name:	MTHFD2L ( <a href="#">MTHFD2L Products</a> )
Background:	Name/Gene ID: MTHFD2L  Synonyms: MTHFD2L, MTHFD2-like
Gene ID:	441024
NCBI Accession:	<a href="#">NP_001138450</a>
UniProt:	<a href="#">Q9H903</a>

## Application Details

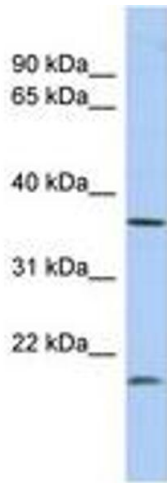
---

Application Notes:	Approved: WB (0.2 - 1 µg/mL)  Usage: Western Blot: Suggested dilution at 1 µg/mL in 5 % skim milk / PBS buffer, and HRP conjugated anti-Rabbit IgG should be diluted in 1: 50,000 - 100,000 as secondary antibody.
Comment:	Target Species of Antibody: Human
Restrictions:	For Research Use only

## Handling

---

Format:	Lyophilized
Reconstitution:	Distilled water
Concentration:	Lot specific
Buffer:	Lyophilized from PBS with 2 % sucrose
Handling Advice:	Avoid repeat freeze-thaw cycles.
Storage:	4 °C, -20 °C
Storage Comment:	Long term: -20°C, the use of 50% glycerol is recommended if storing aliquots in -20°C for long term use (up to 1 year)  Short term (less than 1 week): 4°C. Avoid freeze-thaw cycles.



**Image 1.**