



Datasheet for ABIN6744013
anti-CCDC157 antibody (AA 431-480)



[Go to Product page](#)

1 Image

Overview

Quantity:	100 µL
Target:	CCDC157
Binding Specificity:	AA 431-480
Reactivity:	Cow, Dog, Guinea Pig, Horse, Human, Mouse, Pig, Rabbit, Bat
Host:	Rabbit
Clonality:	Polyclonal
Conjugate:	This CCDC157 antibody is un-conjugated
Application:	Western Blotting (WB)

Product Details

Immunogen:	Synthetic peptide located between aa431-480 of human CCDC157 (Q569K6, NP_001017437). Percent identity by BLAST analysis: Human, Chimpanzee, Marmoset, Mouse, Elephant, Dog, Bovine, Bat, Rabbit, Horse, Pig (100%), Gorilla, Gibbon, Monkey, Rat, Panda (92%), Guinea pig (86%), Opossum (84%), Galago (81%). Type of Immunogen: Synthetic peptide
Specificity:	Human CCDC157
Predicted Reactivity:	Percent identity by BLAST analysis: Human, Mouse, Dog, Horse, Pig (100%) Rat (92%) Guinea pig (86%).
Purification:	Immunoaffinity purified

Target Details

Target:	CCDC157
Alternative Name:	CCDC157 (CCDC157 Products)
Background:	Name/Gene ID: CCDC157 Synonyms: CCDC157, KIAA1656
Gene ID:	550631
NCBI Accession:	NP_001017437
UniProt:	Q569K6

Application Details

Application Notes:	Approved: WB (0.2 - 1 µg/mL) Usage: Western Blot: Suggested dilution at 1 µg/mL in 5 % skim milk / PBS buffer, and HRP conjugated anti-Rabbit IgG should be diluted in 1: 50,000 - 100,000 as secondary antibody.
Comment:	Target Species of Antibody: Human
Restrictions:	For Research Use only

Handling

Format:	Lyophilized
Reconstitution:	Distilled water
Concentration:	Lot specific
Buffer:	Lyophilized from PBS with 2 % sucrose
Handling Advice:	Avoid repeat freeze-thaw cycles.
Storage:	4 °C, -20 °C
Storage Comment:	Long term: -20°C, the use of 50% glycerol is recommended if storing aliquots in -20°C for long term use (up to 1 year) Short term (less than 1 week): 4°C. Avoid freeze-thaw cycles.

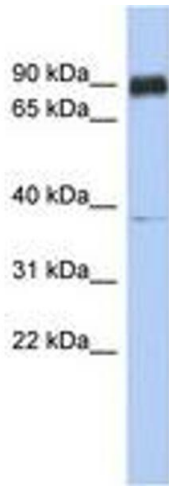


Image 1.