



[Go to Product page](#)

Datasheet for ABIN6744017  
**anti-MBP antibody (AA 107-156)**

1 Image

Overview

Quantity:	100 µL
Target:	MBP
Binding Specificity:	AA 107-156
Reactivity:	Human, Rat, Mouse, Cow, Pig, Rabbit, Monkey, Guinea Pig, Dog, Horse, Bat
Host:	Rabbit
Clonality:	Polyclonal
Conjugate:	This MBP antibody is un-conjugated
Application:	Western Blotting (WB)

Product Details

Immunogen:	Synthetic peptide located between aa107-156 of human MBP (P02686, NP_001020272). Percent identity by BLAST analysis: Human, Chimpanzee, Gorilla, Orangutan, Gibbon, Marmoset, Rat, Dog, Bat, Rabbit, Horse, Pig, Guinea pig (100%), Galago, Elephant, Opossum, Platypus (92%), Mouse (85%).  Type of Immunogen: Synthetic peptide
Specificity:	Human MBP
Predicted Reactivity:	Percent identity by BLAST analysis: Human, Rat, Dog, Rabbit, Horse, Pig, Guinea pig (100%) Mouse (85%).
Purification:	Immunoaffinity purified

## Target Details

---

Target:	MBP
Alternative Name:	Myelin Basic Protein / MBP ( <a href="#">MBP Products</a> )
Background:	Name/Gene ID: MBP  Synonyms: MBP, Myelin A1 protein, Myelin basic protein
Gene ID:	4155
NCBI Accession:	<a href="#">NP_001020272</a>
UniProt:	<a href="#">P02686</a>

## Application Details

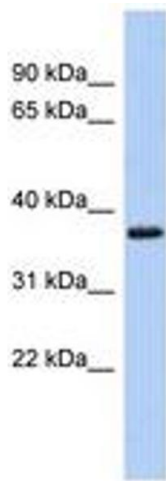
---

Application Notes:	Approved: WB (0.2 - 1 µg/mL)  Usage: Western Blot: Suggested dilution at 1 µg/mL in 5 % skim milk / PBS buffer, and HRP conjugated anti-Rabbit IgG should be diluted in 1: 50,000 - 100,000 as secondary antibody.
Comment:	Target Species of Antibody: Human
Restrictions:	For Research Use only

## Handling

---

Format:	Lyophilized
Reconstitution:	Distilled water
Concentration:	Lot specific
Buffer:	Lyophilized from PBS with 2 % sucrose
Handling Advice:	Avoid repeat freeze-thaw cycles.
Storage:	4 °C, -20 °C
Storage Comment:	Long term: -20°C, the use of 50% glycerol is recommended if storing aliquots in -20°C for long term use (up to 1 year)  Short term (less than 1 week): 4°C. Avoid freeze-thaw cycles.



**Image 1.**