



Datasheet for ABIN6744018
anti-MBP antibody (AA 179-228)



[Go to Product page](#)

1 Image

Overview

Quantity:	100 µL
Target:	MBP
Binding Specificity:	AA 179-228
Reactivity:	Human, Rat, Cow, Pig, Dog, Horse
Host:	Rabbit
Clonality:	Polyclonal
Conjugate:	This MBP antibody is un-conjugated
Application:	Western Blotting (WB)

Product Details

Immunogen:	Synthetic peptide located between aa179-228 of human MBP (P02686, NP_001020272). Percent identity by BLAST analysis: Human, Chimpanzee, Gorilla, Orangutan, Gibbon, Rat (100%), Mouse (93%), Marmoset (92%), Galago, Dog, Bat (86%), Bovine, Horse, Pig (80%). Type of Immunogen: Synthetic peptide
Specificity:	Human MBP
Predicted Reactivity:	Percent identity by BLAST analysis: Human (100%) Mouse (93%) Dog (86%) Rat (85%) Bovine, Horse, Pig (80%).
Purification:	Immunoaffinity purified

Target Details

Target:	MBP
Alternative Name:	Myelin Basic Protein / MBP (MBP Products)
Background:	Name/Gene ID: MBP Synonyms: MBP, Myelin A1 protein, Myelin basic protein
Gene ID:	4155
NCBI Accession:	NP_001020272
UniProt:	P02686

Application Details

Application Notes:	Approved: WB (0.2 - 1 µg/mL) Usage: Western Blot: Suggested dilution at 1 µg/mL in 5 % skim milk / PBS buffer, and HRP conjugated anti-Rabbit IgG should be diluted in 1: 50,000 - 100,000 as secondary antibody.
Comment:	Target Species of Antibody: Human
Restrictions:	For Research Use only

Handling

Format:	Lyophilized
Reconstitution:	Distilled water
Concentration:	Lot specific
Buffer:	Lyophilized from PBS with 2 % sucrose
Handling Advice:	Avoid repeat freeze-thaw cycles.
Storage:	4 °C, -20 °C
Storage Comment:	Long term: -20°C, the use of 50% glycerol is recommended if storing aliquots in -20°C for long term use (up to 1 year) Short term (less than 1 week): 4°C. Avoid freeze-thaw cycles.

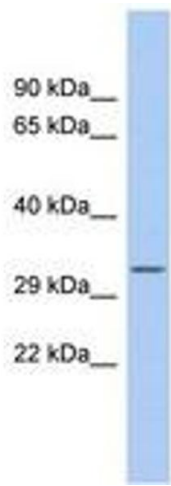


Image 1.