

Datasheet for ABIN6744027
anti-C9orf68 antibody (AA 229-278)



[Go to Product page](#)

1 Image

Overview

Quantity:	100 µL
Target:	C9orf68
Binding Specificity:	AA 229-278
Reactivity:	Human
Host:	Rabbit
Clonality:	Polyclonal
Conjugate:	This C9orf68 antibody is un-conjugated
Application:	Western Blotting (WB)

Product Details

Immunogen:	Synthetic peptide located between aa229-278 of human SPATA6L (Q8N4H0, NP_001034484). Percent identity by BLAST analysis: Human, Chimpanzee, Gorilla (100%), Gibbon (92%). Type of Immunogen: Synthetic peptide
Specificity:	Human C9orf68
Predicted Reactivity:	Percent identity by BLAST analysis: Human (100%).
Purification:	Immunoaffinity purified

Target Details

Target:	C9orf68
Alternative Name:	SPATA6L (C9orf68 Products)

Target Details

Background:	Name/Gene ID: SPATA6L Synonyms: SPATA6L, BA6J24.2, C9orf68, RP11-280I16.2
Gene ID:	55064
NCBI Accession:	NP_001034484

Application Details

Application Notes:	Approved: WB (0.2 - 1 µg/mL) Usage: Western Blot: Suggested dilution at 1 µg/mL in 5 % skim milk / PBS buffer, and HRP conjugated anti-Rabbit IgG should be diluted in 1: 50,000 - 100,000 as secondary antibody.
Comment:	Target Species of Antibody: Human
Restrictions:	For Research Use only

Handling

Format:	Lyophilized
Reconstitution:	Distilled water
Concentration:	Lot specific
Buffer:	Lyophilized from PBS with 2 % sucrose
Handling Advice:	Avoid repeat freeze-thaw cycles.
Storage:	4 °C,-20 °C
Storage Comment:	Long term: -20°C, the use of 50% glycerol is recommended if storing aliquots in -20°C for long term use (up to 1 year) Short term (less than 1 week): 4°C. Avoid freeze-thaw cycles.

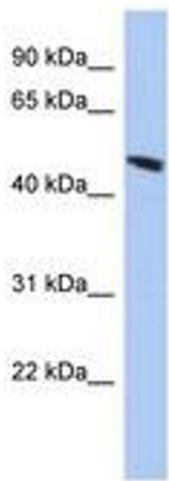


Image 1.