



[Go to Product page](#)

Datasheet for ABIN6744029

## anti-OLAH antibody (AA 35-84)

### 1 Image

#### Overview

Quantity:	100 µL
Target:	OLAH
Binding Specificity:	AA 35-84
Reactivity:	Human, Horse, Mouse, Monkey
Host:	Rabbit
Clonality:	Polyclonal
Conjugate:	This OLAH antibody is un-conjugated
Application:	Western Blotting (WB)

#### Product Details

**Immunogen:** Synthetic peptide located between aa35-84 of human OLAH (Q9NV23, NP\_001034791). Percent identity by BLAST analysis: Human, Gibbon, Monkey (100%), Marmoset (85%), Elephant, Bat, Horse (83%), Mouse (76%).

Type of Immunogen: Synthetic peptide

**Specificity:** Human OLAH

**Predicted Reactivity:** Percent identity by BLAST analysis: Human (100%) Horse (83%).

**Purification:** Immunoaffinity purified

#### Target Details

**Target:** OLAH

## Target Details

---

Alternative Name: [OLAH \(OLAH Products\)](#)

Background: Name/Gene ID: OLAH

Synonyms: OLAH, AURA1, SAST, Thioesterase II, Oleoyl-ACP hydrolase, THEDC1

Gene ID: 55301

NCBI Accession: [NP\\_001034791](#)

UniProt: [Q9NV23](#)

## Application Details

---

Application Notes: Approved: WB (0.2 - 1 µg/mL)

Usage: Western Blot: Suggested dilution at 1 µg/mL in 5 % skim milk / PBS buffer, and HRP conjugated anti-Rabbit IgG should be diluted in 1: 50,000 - 100,000 as secondary antibody.

Comment: Target Species of Antibody: Human

Restrictions: For Research Use only

## Handling

---

Format: Lyophilized

Reconstitution: Distilled water

Concentration: Lot specific

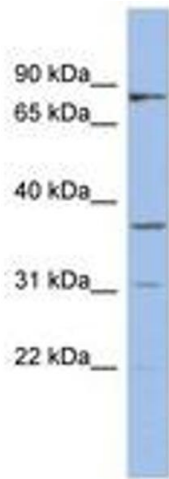
Buffer: Lyophilized from PBS with 2 % sucrose

Handling Advice: Avoid repeat freeze-thaw cycles.

Storage: 4 °C, -20 °C

Storage Comment: Long term: -20°C, the use of 50% glycerol is recommended if storing aliquots in -20°C for long term use (up to 1 year)

Short term (less than 1 week): 4°C. Avoid freeze-thaw cycles.



**Image 1.**