



[Go to Product page](#)

Datasheet for ABIN6744035
anti-HMGCLL1 antibody (N-Term)

1 Image

Overview

Quantity:	100 µL
Target:	HMGCLL1
Binding Specificity:	N-Term
Reactivity:	Human, Horse, Monkey
Host:	Rabbit
Clonality:	Polyclonal
Conjugate:	This HMGCLL1 antibody is un-conjugated
Application:	Western Blotting (WB)

Product Details

Immunogen:	Synthetic peptide from N-Terminus of human HMGCLL1 (Q8TB92-2, NP_001035865). Percent identity by BLAST analysis: Human, Chimpanzee, Gibbon, Monkey, Marmoset, Horse (100%), Mouse, Rat, Bovine (92%), Bat (91%). Type of Immunogen: Synthetic peptide
Specificity:	Human HMGCLL1
Predicted Reactivity:	Percent identity by BLAST analysis: Human, Horse (100%) Mouse, Rat, Bovine (92%).
Purification:	Immunoaffinity purified

Target Details

Target:	HMGCLL1
---------	---------

Target Details

Alternative Name:	HMGCLL1 (HMGCLL1 Products)
Background:	Name/Gene ID: HMGCLL1 Synonyms: HMGCLL1, DKFZP434G1411, Er-cHL, BA418P12.1
Gene ID:	54511
NCBI Accession:	NP_001035865
UniProt:	Q8TB92

Application Details

Application Notes:	Approved: WB (0.2 - 1 µg/mL) Usage: Western Blot: Suggested dilution at 1 µg/mL in 5 % skim milk / PBS buffer, and HRP conjugated anti-Rabbit IgG should be diluted in 1: 50,000 - 100,000 as secondary antibody.
Comment:	Target Species of Antibody: Human
Restrictions:	For Research Use only

Handling

Format:	Lyophilized
Reconstitution:	Distilled water
Concentration:	Lot specific
Buffer:	Lyophilized from PBS with 2 % sucrose
Handling Advice:	Avoid repeat freeze-thaw cycles.
Storage:	4 °C,-20 °C
Storage Comment:	Long term: -20°C, the use of 50% glycerol is recommended if storing aliquots in -20°C for long term use (up to 1 year) Short term (less than 1 week): 4°C. Avoid freeze-thaw cycles.

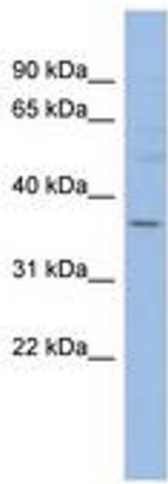


Image 1.