



Datasheet for ABIN6744045
anti-ATP6V1B2 antibody (AA 35-84)



[Go to Product page](#)

1 Image

Overview

Quantity:	100 µL
Target:	ATP6V1B2
Binding Specificity:	AA 35-84
Reactivity:	Human, Mouse, Rat, Cow, Dog, Rabbit, Guinea Pig, Zebrafish (Danio rerio), Pig, Bat, Monkey
Host:	Rabbit
Clonality:	Polyclonal
Conjugate:	This ATP6V1B2 antibody is un-conjugated
Application:	Western Blotting (WB)

Product Details

Immunogen:	Synthetic peptide located between aa35-84 of human ATP6V1B2 (P21281, NP_001684). Percent identity by BLAST analysis: Human, Chimpanzee, Gorilla, Orangutan, Gibbon, Galago, Marmoset, Mouse, Rat, Elephant, Panda, Dog, Bovine, Bat, Rabbit, Pig, Guinea pig (100%), Opossum (92%), Xenopus (85%), Zebra finch, Chicken, Trout, Salmon, Stickleback, Zebrafish (84%). Type of Immunogen: Synthetic peptide
Specificity:	Human ATP6V1B2
Predicted Reactivity:	Percent identity by BLAST analysis: Human, Dog, Rabbit, Pig (100%) Xenopus (85%) Chicken, Zebrafish (84%).
Purification:	Immunoaffinity purified

Target Details

Target:	ATP6V1B2
Alternative Name:	ATP6V1B2 (ATP6V1B2 Products)
Background:	Name/Gene ID: ATP6V1B2 Subfamily: ATPase - V type Family: Transporter Synonyms: ATP6V1B2, ATP6B1B2, ATP6B2, V-ATPase subunit B 2, Vma2, VATB, VPP3, HO57, V-ATPase B2 subunit
Gene ID:	526
NCBI Accession:	NP_001684
UniProt:	P21281
Pathways:	Transition Metal Ion Homeostasis , Proton Transport

Application Details

Application Notes:	Approved: WB (0.2 - 1 µg/mL) Usage: Western Blot: Suggested dilution at 1 µg/mL in 5 % skim milk / PBS buffer, and HRP conjugated anti-Rabbit IgG should be diluted in 1: 50,000 - 100,000 as secondary antibody.
Comment:	Target Species of Antibody: Human
Restrictions:	For Research Use only

Handling

Format:	Lyophilized
Reconstitution:	Distilled water
Concentration:	Lot specific
Buffer:	Lyophilized from PBS with 2 % sucrose
Handling Advice:	Avoid repeat freeze-thaw cycles.
Storage:	4 °C, -20 °C
Storage Comment:	Long term: -20°C, the use of 50% glycerol is recommended if storing aliquots in -20°C for long term use (up to 1 year)

Handling

Short term (less than 1 week): 4°C. Avoid freeze-thaw cycles.

Images

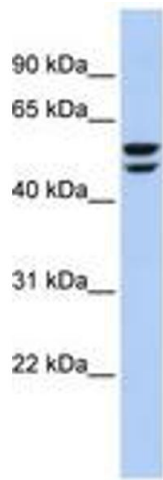


Image 1.