

Datasheet for ABIN6744047
anti-Biglycan antibody (AA 215-264)



[Go to Product page](#)

1 Image

Overview

Quantity:	100 µL
Target:	Biglycan (BGN)
Binding Specificity:	AA 215-264
Reactivity:	Human, Rat, Mouse, Rabbit, Dog, Cow, Sheep, Horse, Guinea Pig, Monkey, Pig, Hamster
Host:	Rabbit
Clonality:	Polyclonal
Conjugate:	This Biglycan antibody is un-conjugated
Application:	Western Blotting (WB)

Product Details

Immunogen:	Synthetic peptide located between aa215-264 of human BGN (P21810, NP_001702). Percent identity by BLAST analysis: Human, Chimpanzee, Gorilla, Orangutan, Gibbon, Monkey, Galago, Marmoset, Mouse, Rat, Sheep, Hamster, Panda, Dog, Bovine, Rabbit, Horse, Pig, Guinea pig (100%), Elephant (92%), Lizard (91%), Platypus (85%), Xenopus (83%). Type of Immunogen: Synthetic peptide
Specificity:	Human BGN / Biglycan
Predicted Reactivity:	Percent identity by BLAST analysis: Human, Mouse, Pig (100%) Xenopus (83%).
Purification:	Immunoaffinity purified

Target Details

Target:	Biglycan (BGN)
Alternative Name:	BGN / Biglycan (BGN Products)
Background:	Name/Gene ID: BGN Synonyms: BGN, Bone/cartilage proteoglycan I, Biglycan, Biglycan proteoglycan, DSPG1, PG-S1, Small leucine-rich protein 1A, PGI, Bone/cartilage proteoglycan-I, SLRR1A
Gene ID:	633
NCBI Accession:	NP_001702
UniProt:	P21810
Pathways:	Glycosaminoglycan Metabolic Process

Application Details

Application Notes:	Approved: WB (0.2 - 1 µg/mL) Usage: Western Blot: Suggested dilution at 1 µg/mL in 5 % skim milk / PBS buffer, and HRP conjugated anti-Rabbit IgG should be diluted in 1: 50,000 - 100,000 as secondary antibody. Not recommended for: IHC-P
Comment:	Target Species of Antibody: Human
Restrictions:	For Research Use only

Handling

Format:	Lyophilized
Reconstitution:	Distilled water
Concentration:	Lot specific
Buffer:	Lyophilized from PBS with 2 % sucrose
Handling Advice:	Avoid repeat freeze-thaw cycles.
Storage:	4 °C,-20 °C
Storage Comment:	Long term: -20°C, the use of 50% glycerol is recommended if storing aliquots in -20°C for long term use (up to 1 year)

Handling

Short term (less than 1 week): 4°C. Avoid freeze-thaw cycles.

Images

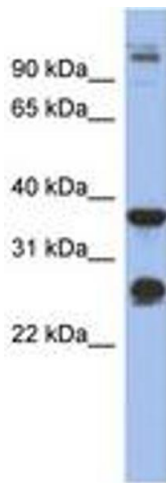


Image 1.