

Datasheet for ABIN6744048  
**anti-MPP3 antibody (AA 35-84)**



[Go to Product page](#)

1 Image

Overview

Quantity:	100 µL
Target:	MPP3
Binding Specificity:	AA 35-84
Reactivity:	Human, Mouse, Rat, Cow, Pig, Rabbit, Dog, Bat, Monkey
Host:	Rabbit
Clonality:	Polyclonal
Conjugate:	This MPP3 antibody is un-conjugated
Application:	Western Blotting (WB)

Product Details

Immunogen:	Synthetic peptide located between aa35-84 of human MPP3 (Q13368, NP_001923). Percent identity by BLAST analysis: Human, Chimpanzee, Gorilla, Gibbon, Monkey, Galago, Marmoset, Mouse, Rat, Elephant, Panda, Dog, Bovine, Bat, Rabbit, Pig, Opossum (100%), Horse, Guinea pig, Turkey, Chicken (92%).  Type of Immunogen: Synthetic peptide
Specificity:	Human MPP3
Predicted Reactivity:	Percent identity by BLAST analysis: Human, Mouse, Rat, Dog, Bovine, Rabbit, Pig (100%) Horse, Chicken (92%).
Purification:	Immunoaffinity purified

## Target Details

---

Target:	MPP3
Alternative Name:	MPP3 / MMP-3 ( <a href="#">MPP3 Products</a> )
Background:	Name/Gene ID: MPP3 Family: MAGUK  Synonyms: MPP3, Discs large homolog 3, Discs, large homolog 3, Protein MPP3, MAGUK p55 subfamily member 3
Gene ID:	4356
NCBI Accession:	<a href="#">NP_001923</a>
UniProt:	<a href="#">Q13368</a>

## Application Details

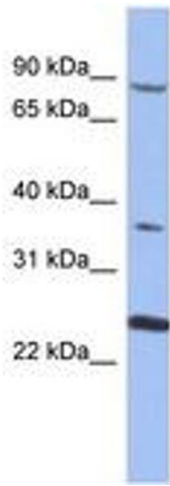
---

Application Notes:	Approved: WB (0.2 - 1 µg/mL)  Usage: Western Blot: Suggested dilution at 1 µg/mL in 5 % skim milk / PBS buffer, and HRP conjugated anti-Rabbit IgG should be diluted in 1: 50,000 - 100,000 as secondary antibody.
Comment:	Target Species of Antibody: Human
Restrictions:	For Research Use only

## Handling

---

Format:	Lyophilized
Reconstitution:	Distilled water
Concentration:	Lot specific
Buffer:	Lyophilized from PBS with 2 % sucrose
Handling Advice:	Avoid repeat freeze-thaw cycles.
Storage:	4 °C,-20 °C
Storage Comment:	Long term: -20°C, the use of 50% glycerol is recommended if storing aliquots in -20°C for long term use (up to 1 year)  Short term (less than 1 week): 4°C. Avoid freeze-thaw cycles.



**Image 1.**