



[Go to Product page](#)

Datasheet for ABIN6744055
anti-Matrilin 3 antibody (AA 71-120)

1 Image

Overview

Quantity:	100 µL
Target:	Matrilin 3 (MATN3)
Binding Specificity:	AA 71-120
Reactivity:	Human, Mouse, Rat, Rabbit, Guinea Pig, Dog, Zebrafish (Danio rerio), Horse, Monkey, Pig, Bat
Host:	Rabbit
Clonality:	Polyclonal
Conjugate:	This Matrilin 3 antibody is un-conjugated
Application:	Western Blotting (WB)

Product Details

Immunogen:	Synthetic peptide located between aa71-120 of human MATN3 (O15232, NP_002372). Percent identity by BLAST analysis: Human, Chimpanzee, Gorilla, Monkey, Galago, Marmoset, Mouse, Rat, Dog, Bat, Rabbit, Horse, Pig, Guinea pig (100%), Gibbon, Elephant, Bovine (92%). Type of Immunogen: Synthetic peptide
Specificity:	Human MATN3 / Matrilin 3
Predicted Reactivity:	Percent identity by BLAST analysis: Human, Mouse, Rat, Dog, Rabbit, Horse, Pig, Guinea pig (100%) Bovine (92%).
Purification:	Immunoaffinity purified

Target Details

Target: Matrilin 3 (MATN3)

Alternative Name: MATN3 / Matrilin 3 ([MATN3 Products](#))

Background: Name/Gene ID: MATN3

Synonyms: MATN3, DIPOA, EDM5, HOA, Matrilin 3, OADIP, OS2, Matrilin-3

Gene ID: 4148

NCBI Accession: [NP_002372](#)

UniProt: [O15232](#)

Application Details

Application Notes: Approved: WB (0.2 - 1 µg/mL)

Usage: Western Blot: Suggested dilution at 1 µg/mL in 5 % skim milk / PBS buffer, and HRP conjugated anti-Rabbit IgG should be diluted in 1: 50,000 - 100,000 as secondary antibody.

Comment: Target Species of Antibody: Human

Restrictions: For Research Use only

Handling

Format: Lyophilized

Reconstitution: Distilled water

Concentration: Lot specific

Buffer: Lyophilized from PBS with 2 % sucrose

Handling Advice: Avoid repeat freeze-thaw cycles.

Storage: 4 °C, -20 °C

Storage Comment: Long term: -20°C, the use of 50% glycerol is recommended if storing aliquots in -20°C for long term use (up to 1 year)

Short term (less than 1 week): 4°C. Avoid freeze-thaw cycles.

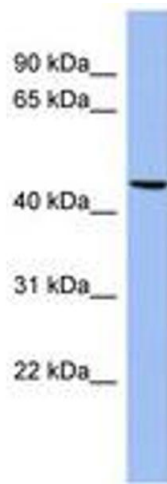


Image 1.