

Datasheet for ABIN6744059
anti-MYD88 antibody (AA 215-264)



[Go to Product page](#)

1 Image

Overview

Quantity:	100 µL
Target:	MYD88
Binding Specificity:	AA 215-264
Reactivity:	Human, Mouse, Rat, Dog, Monkey, Horse, Rabbit, Cow, Sheep, Pig, Bat
Host:	Rabbit
Clonality:	Polyclonal
Conjugate:	This MYD88 antibody is un-conjugated
Application:	Western Blotting (WB)

Product Details

Immunogen:	Synthetic peptide located between aa215-264 of human MYD88 (Q99836, NP_002459). Percent identity by BLAST analysis: Human, Chimpanzee, Gorilla, Orangutan, Gibbon, Monkey, Galago, Marmoset, Sheep, Dog, Bovine, Bat, Rabbit, Horse, Pig (100%), Elephant, Guinea pig, Lizard (92%), Mouse, Rat, Hamster, Turkey, Zebra finch, Chicken, Platypus, Pufferfish (85%). Type of Immunogen: Synthetic peptide
Specificity:	Human MYD88
Predicted Reactivity:	Percent identity by BLAST analysis: Human, Sheep, Dog, Bovine, Rabbit, Horse, Pig (100%) Guinea pig (92%) Mouse, Rat, Chicken (85%).
Purification:	Immunoaffinity purified

Target Details

Target:	MYD88
Alternative Name:	MYD88 (MYD88 Products)
Background:	Name/Gene ID: MYD88 Synonyms: MYD88, MYD88D
Gene ID:	4615
NCBI Accession:	NP_002459
UniProt:	Q99836
Pathways:	NF-kappaB Signaling , TLR Signaling , Neurotrophin Signaling Pathway , Activation of Innate immune Response , Cellular Response to Molecule of Bacterial Origin , Positive Regulation of Immune Effector Process , Production of Molecular Mediator of Immune Response , Toll-Like Receptors Cascades

Application Details

Application Notes:	Approved: WB (0.2 - 1 µg/mL) Usage: Western Blot: Suggested dilution at 1 µg/mL in 5 % skim milk / PBS buffer, and HRP conjugated anti-Rabbit IgG should be diluted in 1: 50,000 - 100,000 as secondary antibody.
Comment:	Target Species of Antibody: Human
Restrictions:	For Research Use only

Handling

Format:	Lyophilized
Reconstitution:	Distilled water
Concentration:	Lot specific
Buffer:	Lyophilized from PBS with 2 % sucrose
Handling Advice:	Avoid repeat freeze-thaw cycles.
Storage:	4 °C,-20 °C
Storage Comment:	Long term: -20°C, the use of 50% glycerol is recommended if storing aliquots in -20°C for long term use (up to 1 year)

Handling

Short term (less than 1 week): 4°C. Avoid freeze-thaw cycles.

Images

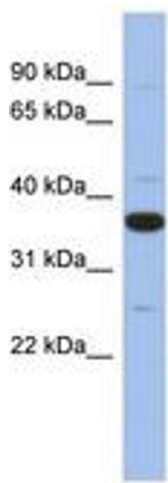


Image 1.