

Datasheet for ABIN6744062  
**anti-TBC1D25 antibody (AA 179-228)**[Go to Product page](#)

## 1 Image

## Overview

Quantity:	100 µL
Target:	TBC1D25
Binding Specificity:	AA 179-228
Reactivity:	Human, Mouse, Rat, Rabbit, Cow, Dog, Guinea Pig, Horse, Pig, Zebrafish (Danio rerio), Bat
Host:	Rabbit
Clonality:	Polyclonal
Conjugate:	This TBC1D25 antibody is un-conjugated
Application:	Western Blotting (WB)

## Product Details

Immunogen:	Synthetic peptide located between aa179-228 of human TBC1D25 (Q3MII6, NP_002527). Percent identity by BLAST analysis: Human, Chimpanzee, Gibbon, Galago, Marmoset, Mouse, Rat, Elephant, Dog, Bovine, Bat, Rabbit, Horse, Pig, Guinea pig (100%), Monkey, Platypus (92%), Opossum (85%), Zebrafish (84%).  Type of Immunogen: Synthetic peptide
Specificity:	Human TBC1D25
Predicted Reactivity:	Percent identity by BLAST analysis: Human, Mouse, Rat, Dog, Bovine, Rabbit, Horse, Guinea pig (100%) Zebrafish (84%).
Purification:	Immunoaffinity purified

## Target Details

Target:	TBC1D25
Alternative Name:	TBC1D25 ( <a href="#">TBC1D25 Products</a> )
Background:	Name/Gene ID: TBC1D25  Synonyms: TBC1D25, 5SN3 snoRNA, TBC1 domain family member 25, MG81, OATL1, TBC1 domain family, member 25
Gene ID:	4943
NCBI Accession:	<a href="#">NP_002527</a>
UniProt:	<a href="#">Q3MII6</a>

## Application Details

Application Notes:	Approved: WB (0.2 - 1 µg/mL)  Usage: Western Blot: Suggested dilution at 1 µg/mL in 5 % skim milk / PBS buffer, and HRP conjugated anti-Rabbit IgG should be diluted in 1: 50,000 - 100,000 as secondary antibody.
Comment:	Target Species of Antibody: Human
Restrictions:	For Research Use only

## Handling

Format:	Lyophilized
Reconstitution:	Distilled water
Concentration:	Lot specific
Buffer:	Lyophilized from PBS with 2 % sucrose
Handling Advice:	Avoid repeat freeze-thaw cycles.
Storage:	4 °C, -20 °C
Storage Comment:	Long term: -20°C, the use of 50% glycerol is recommended if storing aliquots in -20°C for long term use (up to 1 year)  Short term (less than 1 week): 4°C. Avoid freeze-thaw cycles.

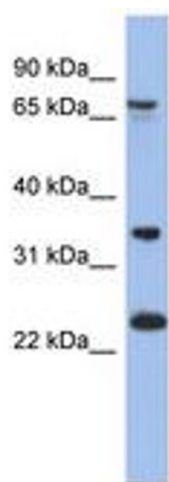


Image 1.