



[Go to Product page](#)

Datasheet for ABIN6744075
anti-PRKACB antibody (C-Term)

1 Image

Overview

Quantity:	100 µL
Target:	PRKACB
Binding Specificity:	C-Term
Reactivity:	Human, Rat, Mouse, Cow, Horse, Pig, Rabbit, Guinea Pig, Dog, Hamster, Monkey, Bat
Host:	Rabbit
Clonality:	Polyclonal
Conjugate:	This PRKACB antibody is un-conjugated
Application:	Western Blotting (WB)

Product Details

Immunogen:	Synthetic peptide from C-Terminus of human PRKACB (P22694, NP_002722). Percent identity by BLAST analysis: Human, Chimpanzee, Gorilla, Orangutan, Gibbon, Monkey, Galago, Marmoset, Mouse, Rat, Hamster, Elephant, Panda, Dog, Bovine, Bat, Rabbit, Horse, Pig, Guinea pig (100%), Sheep, Opossum, Turkey, Zebra finch, Chicken, Platypus, Xenopus, Trout, Catfish, Salmon, Zebrafish, Drosophila (92%), Nematode (85%). Type of Immunogen: Synthetic peptide
Specificity:	Human PRKACB
Predicted Reactivity:	Percent identity by BLAST analysis: Human, Mouse, Rat, Dog, Bovine, Horse, Guinea pig (100%) Chicken, Xenopus, Zebrafish (92%).
Purification:	Immunoaffinity purified

Target Details

Target:	PRKACB
Alternative Name:	PRKACB (PRKACB Products)
Background:	Name/Gene ID: PRKACB Subfamily: cAMP Family: Protein Kinase Synonyms: PRKACB, Cbeta, PKACB, PKA C-beta, PKA Cbeta
Gene ID:	5567
NCBI Accession:	NP_002722
UniProt:	P22694
Pathways:	AMPK Signaling , Hedgehog Signaling , EGFR Signaling Pathway , Neurotrophin Signaling Pathway , Thyroid Hormone Synthesis , Myometrial Relaxation and Contraction , M Phase , G-protein mediated Events , Interaction of EGFR with phospholipase C-gamma , Lipid Metabolism

Application Details

Application Notes:	Approved: WB (0.2 - 1 µg/mL) Usage: Western Blot: Suggested dilution at 1 µg/mL in 5 % skim milk / PBS buffer, and HRP conjugated anti-Rabbit IgG should be diluted in 1: 50,000 - 100,000 as secondary antibody.
Comment:	Target Species of Antibody: Human
Restrictions:	For Research Use only

Handling

Format:	Lyophilized
Reconstitution:	Distilled water
Concentration:	Lot specific
Buffer:	Lyophilized from PBS with 2 % sucrose
Handling Advice:	Avoid repeat freeze-thaw cycles.
Storage:	4 °C,-20 °C
Storage Comment:	Long term: -20°C, the use of 50% glycerol is recommended if storing aliquots in -20°C for long

Handling

term use (up to 1 year)

Short term (less than 1 week): 4°C. Avoid freeze-thaw cycles.

Images

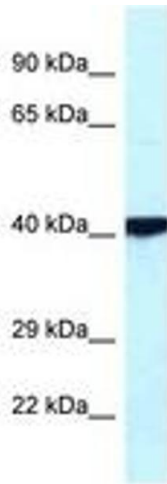


Image 1.