



[Go to Product page](#)

Datasheet for ABIN6744076
anti-PRKAR1B antibody (C-Term)

1 Image

Overview

Quantity:	100 µL
Target:	PRKAR1B
Binding Specificity:	C-Term
Reactivity:	Human, Mouse, Rat, Dog, Zebrafish (Danio rerio), Chicken, Cow, Guinea Pig, Monkey, Pig, Xenopus laevis
Host:	Rabbit
Clonality:	Polyclonal
Conjugate:	This PRKAR1B antibody is un-conjugated
Application:	Western Blotting (WB)

Product Details

Immunogen:	Synthetic peptide from C-Terminus of human PRKAR1B (P31321, NP_002726). Percent identity by BLAST analysis: Human, Chimpanzee, Gorilla, Gibbon, Galago, Marmoset, Mouse, Rat, Elephant, Panda, Dog, Bovine, Pig, Opossum, Guinea pig, Turkey, Zebra finch, Chicken, Platypus, Xenopus, Stickleback, Zebrafish (100%), Horse (92%), Orangutan, Sheep, Hamster, Bat, Seabass (84%). Type of Immunogen: Synthetic peptide
Specificity:	Human PRKAR1B
Predicted Reactivity:	Percent identity by BLAST analysis: Mouse, Rat, Dog, Bovine, Pig, Chicken, Zebrafish (100%) Horse (92%) Xenopus (84%).

Product Details

Purification: Immunoaffinity purified

Target Details

Target: PRKAR1B

Alternative Name: PRKAR1B ([PRKAR1B Products](#))

Background: Name/Gene ID: PRKAR1B
Family: Protein Kinase Non Catalytic

Synonyms: PRKAR1B, PRKAR1

Gene ID: 5575

NCBI Accession: [NP_002726](#)

UniProt: [P31321](#)

Pathways: [Hedgehog Signaling](#), [EGFR Signaling Pathway](#), [Neurotrophin Signaling Pathway](#), [Myometrial Relaxation and Contraction](#), [G-protein mediated Events](#), [Interaction of EGFR with phospholipase C-gamma](#)

Application Details

Application Notes: Approved: WB (0.2 - 1 µg/mL)

Usage: Western Blot: Suggested dilution at 1 µg/mL in 5 % skim milk / PBS buffer, and HRP conjugated anti-Rabbit IgG should be diluted in 1: 50,000 - 100,000 as secondary antibody.

Comment: Target Species of Antibody: Human

Restrictions: For Research Use only

Handling

Format: Lyophilized

Reconstitution: Distilled water

Concentration: Lot specific

Buffer: Lyophilized from PBS with 2 % sucrose

Handling Advice: Avoid repeat freeze-thaw cycles.

Handling

Storage: 4 °C, -20 °C

Storage Comment: Long term: -20°C, the use of 50% glycerol is recommended if storing aliquots in -20°C for long term use (up to 1 year)
Short term (less than 1 week): 4°C. Avoid freeze-thaw cycles.

Images

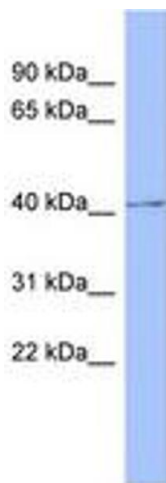


Image 1.