

Datasheet for ABIN6744080 anti-PSMB1 antibody (AA 107-156)



[Go to Product page](#)

1 Image

Overview

Quantity:	100 µL
Target:	PSMB1
Binding Specificity:	AA 107-156
Reactivity:	Human, Mouse, Rat, Rabbit, Cow, Dog, Guinea Pig, Horse, Bat, Chicken, Monkey, Pig, Xenopus laevis
Host:	Rabbit
Clonality:	Polyclonal
Conjugate:	This PSMB1 antibody is un-conjugated
Application:	Western Blotting (WB)

Product Details

Immunogen:	Synthetic peptide located between aa107-156 of human PSMB1 (P20618, NP_002784). Percent identity by BLAST analysis: Human, Chimpanzee, Gorilla, Gibbon, Monkey, Galago, Marmoset, Mouse, Rat, Elephant, Panda, Dog, Bovine, Bat, Rabbit, Horse, Pig, Opossum, Guinea pig, Turkey, Zebra finch, Chicken, Platypus, Lizard, Xenopus, Frog, Trout, Salmon (100%), Sablefish, Stickleback, Pike, Zebrafish (92%), Smelt (85%). Type of Immunogen: Synthetic peptide
Specificity:	Human PSMB1
Predicted Reactivity:	Percent identity by BLAST analysis: Human, Mouse, Rat, Dog, Bovine, Chicken, Xenopus (100%) Zebrafish (92%).

Product Details

Purification: Immunoaffinity purified

Target Details

Target: PSMB1

Alternative Name: PSMB1 ([PSMB1 Products](#))

Background: Name/Gene ID: PSMB1
Subfamily: Threonine T1
Family: Protease

Synonyms: PSMB1, Macropain subunit C5, HC5, PMSB1, Proteasome gamma chain, Proteasome subunit beta 1, Proteasome beta 1 subunit, Proteasome component C5, Lmpc5, Proteasome subunit beta type-1, Proteasome subunit HC5, PSC5

Gene ID: 5689

NCBI Accession: [NP_002784](#)

UniProt: [P20618](#)

Pathways: [Mitotic G1-G1/S Phases](#), [DNA Replication](#), [Synthesis of DNA](#)

Application Details

Application Notes: Approved: WB (0.2 - 1 µg/mL)

Usage: Western Blot: Suggested dilution at 1 µg/mL in 5 % skim milk / PBS buffer, and HRP conjugated anti-Rabbit IgG should be diluted in 1: 50,000 - 100,000 as secondary antibody.

Comment: Target Species of Antibody: Human

Restrictions: For Research Use only

Handling

Format: Lyophilized

Reconstitution: Distilled water

Concentration: Lot specific

Buffer: Lyophilized from PBS with 2 % sucrose

Handling

Handling Advice:	Avoid repeat freeze-thaw cycles.
Storage:	4 °C,-20 °C
Storage Comment:	Long term: -20°C, the use of 50% glycerol is recommended if storing aliquots in -20°C for long term use (up to 1 year) Short term (less than 1 week): 4°C. Avoid freeze-thaw cycles.

Images

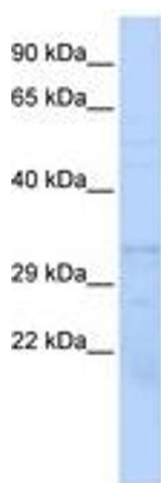


Image 1.