

Datasheet for ABIN6744086
anti-PSMD3 antibody (AA 107-156)[Go to Product page](#)

1 Image

Overview

Quantity:	100 µL
Target:	PSMD3
Binding Specificity:	AA 107-156
Reactivity:	Human, Mouse, Rat, Cow, Dog, Guinea Pig, Horse, Monkey, Pig
Host:	Rabbit
Clonality:	Polyclonal
Conjugate:	This PSMD3 antibody is un-conjugated
Application:	Western Blotting (WB)

Product Details

Immunogen:	Synthetic peptide located between aa107-156 of human PSMD3 (043242, NP_002800). Percent identity by BLAST analysis: Human, Chimpanzee, Gorilla, Gibbon, Monkey, Mouse, Rat, Elephant, Dog, Bovine, Horse, Pig, Guinea pig, Lizard (100%), Galago, Rabbit, Opossum, Zebra finch (92%), Bat, Chicken, Xenopus, Salmon (85%), Stickleback (83%). Type of Immunogen: Synthetic peptide
Specificity:	Human PSMD3
Predicted Reactivity:	Percent identity by BLAST analysis: Human, Mouse, Rat, Dog, Bovine, Horse, Guinea pig (100%) Rabbit (92%) Chicken, Xenopus (85%).
Purification:	Immunoaffinity purified

Target Details

Target:	PSMD3
Alternative Name:	p58 / PSMD3 (PSMD3 Products)
Background:	Name/Gene ID: PSMD3 Family: Protease Regulatory Synonyms: PSMD3, p58, TSTA2, Proteasome subunit p58, RPN3, S3
Gene ID:	5709
NCBI Accession:	NP_002800
UniProt:	O43242
Pathways:	Mitotic G1-G1/S Phases , DNA Replication , Synthesis of DNA , Ubiquitin Proteasome Pathway

Application Details

Application Notes:	Approved: WB (0.2 - 1 µg/mL) Usage: Western Blot: Suggested dilution at 1 µg/mL in 5 % skim milk / PBS buffer, and HRP conjugated anti-Rabbit IgG should be diluted in 1: 50,000 - 100,000 as secondary antibody.
Comment:	Target Species of Antibody: Human
Restrictions:	For Research Use only

Handling

Format:	Lyophilized
Reconstitution:	Distilled water
Concentration:	Lot specific
Buffer:	Lyophilized from PBS with 2 % sucrose
Handling Advice:	Avoid repeat freeze-thaw cycles.
Storage:	4 °C,-20 °C
Storage Comment:	Long term: -20°C, the use of 50% glycerol is recommended if storing aliquots in -20°C for long term use (up to 1 year) Short term (less than 1 week): 4°C. Avoid freeze-thaw cycles.

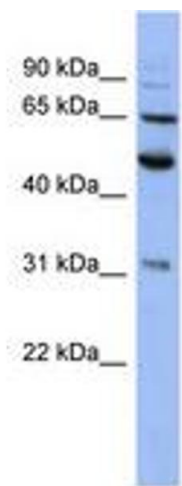


Image 1.