



[Go to Product page](#)

Datasheet for ABIN6744089  
**anti-RAD23B antibody (AA 287-336)**

1 Image

### Overview

|                      |  |
|----------------------|--|
| Quantity:            | 100 µL   |
| Target:              | RAD23B   |
| Binding Specificity: | AA 287-336   |
| Reactivity:          | Human, Mouse, Rat, Cow, Monkey, Dog, Rabbit, Guinea Pig, Horse, Zebrafish (Danio rerio), Chicken, Bat, Pig |
| Host:                | Rabbit   |
| Clonality:           | Polyclonal   |
| Conjugate:           | This RAD23B antibody is un-conjugated  |
| Application:         | Western Blotting (WB)  |

### Product Details

|                       |   |
|-----------------------|---|
| Immunogen:            | Synthetic peptide located between aa287-336 of human RAD23B (P54727, NP_002865).<br>Percent identity by BLAST analysis: Human, Chimpanzee, Gorilla, Gibbon, Monkey, Galago, Marmoset, Mouse, Rat, Elephant, Dog, Bovine, Bat, Rabbit, Horse, Pig, Opossum, Guinea pig, Turkey, Zebra finch, Chicken, Platypus, Salmon, Zebrafish (100%), Xenopus (92%).<br><br>Type of Immunogen: Synthetic peptide |
| Specificity:          | Human RAD23B  |
| Predicted Reactivity: | Percent identity by BLAST analysis: Human, Mouse, Dog, Horse, Pig, Chicken, Zebrafish (100%)<br>Xenopus (92%).  |
| Purification:         | Immunoaffinity purified   |

## Target Details

---

Target: RAD23B

Alternative Name: RAD23B / HR23B ([RAD23B Products](#))

Background: Name/Gene ID: RAD23B

Synonyms: RAD23B, HR23B, p58, RAD23, yeast homolog of, B, HHR23B

Gene ID: 5887

NCBI Accession: [NP\\_002865](#)

UniProt: [P54727](#)

Pathways: [DNA Damage Repair](#)

## Application Details

---

Application Notes: Approved: WB (0.2 - 1 µg/mL)

Usage: Western Blot: Suggested dilution at 1 µg/mL in 5 % skim milk / PBS buffer, and HRP conjugated anti-Rabbit IgG should be diluted in 1: 50,000 - 100,000 as secondary antibody.

Comment: Target Species of Antibody: Human

Restrictions: For Research Use only

## Handling

---

Format: Lyophilized

Reconstitution: Distilled water

Concentration: Lot specific

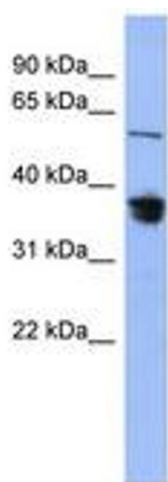
Buffer: Lyophilized from PBS with 2 % sucrose

Handling Advice: Avoid repeat freeze-thaw cycles.

Storage: 4 °C, -20 °C

Storage Comment: Long term: -20°C, the use of 50% glycerol is recommended if storing aliquots in -20°C for long term use (up to 1 year)

Short term (less than 1 week): 4°C. Avoid freeze-thaw cycles.



**Image 1.**