



[Go to Product page](#)

Datasheet for ABIN6744095
anti-PPP2R1A antibody (C-Term)

1 Image

Overview

Quantity:	100 µL
Target:	PPP2R1A
Binding Specificity:	C-Term
Reactivity:	Human, Mouse, Rat, Horse, Guinea Pig, Pig, Rabbit, Monkey
Host:	Rabbit
Clonality:	Polyclonal
Conjugate:	This PPP2R1A antibody is un-conjugated
Application:	Western Blotting (WB)

Product Details

Immunogen:	Synthetic peptide from C-Terminus of human PPP2R1A (P30153, NP_055040). Percent identity by BLAST analysis: Human, Chimpanzee, Gorilla, Orangutan, Gibbon, Monkey, Galago, Marmoset, Mouse, Rat, Elephant, Panda, Rabbit, Horse, Pig, Opossum, Guinea pig (100%), Bovine (92%), Xenopus (85%). Type of Immunogen: Synthetic peptide
Specificity:	Human PPP2R1A
Predicted Reactivity:	Percent identity by BLAST analysis: Human, Mouse, Rat, Rabbit, Horse, Guinea pig (100%), Bovine (92%) Xenopus (85%).
Purification:	Immunoaffinity purified

Target Details

Target:	PPP2R1A
Alternative Name:	PPP2R1A (PPP2R1A Products)
Background:	Name/Gene ID: PPP2R1A Synonyms: PPP2R1A, PP2A-Aalpha, PP2AAALPHA, PR65A
Gene ID:	5518
NCBI Accession:	NP_055040
UniProt:	P30153
Pathways:	PI3K-Akt Signaling , Mitotic G1-G1/S Phases , M Phase , Hepatitis C , Toll-Like Receptors Cascades

Application Details

Application Notes:	Approved: WB (0.2 - 1 µg/mL) Usage: Western Blot: Suggested dilution at 1 µg/mL in 5 % skim milk / PBS buffer, and HRP conjugated anti-Rabbit IgG should be diluted in 1: 50,000 - 100,000 as secondary antibody.
Comment:	Target Species of Antibody: Human
Restrictions:	For Research Use only

Handling

Format:	Lyophilized
Reconstitution:	Distilled water
Concentration:	Lot specific
Buffer:	Lyophilized from PBS with 2 % sucrose
Handling Advice:	Avoid repeat freeze-thaw cycles.
Storage:	4 °C,-20 °C
Storage Comment:	Long term: -20°C, the use of 50% glycerol is recommended if storing aliquots in -20°C for long term use (up to 1 year) Short term (less than 1 week): 4°C. Avoid freeze-thaw cycles.

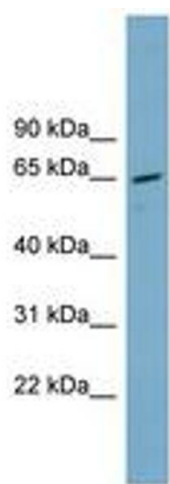


Image 1.