



[Go to Product page](#)

Datasheet for ABIN6744101
anti-CCDC174 antibody (AA 215-264)

1 Image

Overview

| | |
|----------------------|--|
| Quantity: | 100 µL |
| Target: | CCDC174 |
| Binding Specificity: | AA 215-264 |
| Reactivity: | Human, Mouse, Rat, Cow, Dog, Horse, Rabbit, Guinea Pig, Pig, Bat, Hamster, Monkey, Chicken, Xenopus laevis |
| Host: | Rabbit |
| Clonality: | Polyclonal |
| Conjugate: | This CCDC174 antibody is un-conjugated |
| Application: | Western Blotting (WB) |

Product Details

| | |
|-----------------------|--|
| Immunogen: | Synthetic peptide located between aa215-264 of human CCDC174 (Q6PII3, NP_057558). Percent identity by BLAST analysis: Human, Chimpanzee, Gorilla, Gibbon, Monkey, Galago, Marmoset, Mouse, Rat, Hamster, Elephant, Dog, Bovine, Bat, Rabbit, Horse, Pig, Opossum, Guinea pig, Turkey, Zebra finch, Chicken, Lizard, Xenopus (100%), Platypus (92%). Type of Immunogen: Synthetic peptide |
| Specificity: | Human C3orf19 |
| Predicted Reactivity: | Percent identity by BLAST analysis: Dog, Rabbit, Horse, Guinea pig (100%) Xenopus (92%). |
| Purification: | Immunoaffinity purified |

Target Details

| | |
|-------------------|---|
| Target: | CCDC174 |
| Alternative Name: | CCDC174 (CCDC174 Products) |
| Background: | Name/Gene ID: CCDC174 Synonyms: CCDC174, C3orf19 |
| Gene ID: | 51244 |
| NCBI Accession: | NP_057558 |
| UniProt: | Q6PII3 |

Application Details

| | |
|--------------------|--|
| Application Notes: | Approved: WB (0.2 - 1 µg/mL) Usage: Western Blot: Suggested dilution at 1 µg/mL in 5 % skim milk / PBS buffer, and HRP conjugated anti-Rabbit IgG should be diluted in 1: 50,000 - 100,000 as secondary antibody. |
| Comment: | Target Species of Antibody: Human |
| Restrictions: | For Research Use only |

Handling

| | |
|------------------|---|
| Format: | Lyophilized |
| Reconstitution: | Distilled water |
| Concentration: | Lot specific |
| Buffer: | Lyophilized from PBS with 2 % sucrose |
| Handling Advice: | Avoid repeat freeze-thaw cycles. |
| Storage: | 4 °C, -20 °C |
| Storage Comment: | Long term: -20°C, the use of 50% glycerol is recommended if storing aliquots in -20°C for long term use (up to 1 year) Short term (less than 1 week): 4°C. Avoid freeze-thaw cycles. |

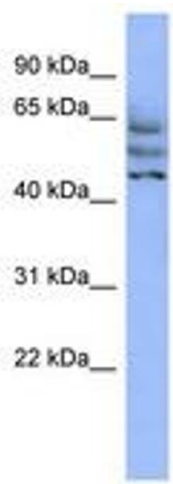


Image 1.