

Datasheet for ABIN6744106

anti-OTUB1 antibody (AA 35-84)



[Go to Product page](#)

1 Image

Overview

Quantity:	100 µL
Target:	OTUB1
Binding Specificity:	AA 35-84
Reactivity:	Human, Mouse, Rat, Cow, Dog, Horse, Guinea Pig, Pig, Zebrafish (Danio rerio), Monkey
Host:	Rabbit
Clonality:	Polyclonal
Conjugate:	This OTUB1 antibody is un-conjugated
Application:	Western Blotting (WB)

Product Details

Immunogen:	Synthetic peptide located between aa35-84 of human OTUB1 (Q96FW1, NP_060140). Percent identity by BLAST analysis: Human, Chimpanzee, Galago, Marmoset, Mouse, Rat, Elephant, Dog, Bovine, Horse, Pig, Guinea pig (100%), Catfish (92%). Type of Immunogen: Synthetic peptide
Specificity:	Human OTUB1
Predicted Reactivity:	Percent identity by BLAST analysis: Human, Mouse, Rat, Dog, Bovine, Horse, Pig (100%).
Purification:	Immunoaffinity purified

Target Details

Target:	OTUB1
---------	-------

Target Details

Alternative Name:	OTUB1 / OTU1 (OTUB1 Products)
Background:	Name/Gene ID: OTUB1 Synonyms: OTUB1, Deubiquitinating enzyme OTUB1, HSPC263, HOTU1, OTU-domain Ubal-binding 1, OTU1, Otubain-1, Ubiquitin thioesterase OTUB1, OTB1
Gene ID:	55611
NCBI Accession:	NP_060140
UniProt:	Q96FW1

Application Details

Application Notes:	Approved: WB (0.2 - 1 µg/mL) Usage: Western Blot: Suggested dilution at 1 µg/mL in 5 % skim milk / PBS buffer, and HRP conjugated anti-Rabbit IgG should be diluted in 1: 50,000 - 100,000 as secondary antibody.
Comment:	Target Species of Antibody: Human
Restrictions:	For Research Use only

Handling

Format:	Lyophilized
Reconstitution:	Distilled water
Concentration:	Lot specific
Buffer:	Lyophilized from PBS with 2 % sucrose
Handling Advice:	Avoid repeat freeze-thaw cycles.
Storage:	4 °C, -20 °C
Storage Comment:	Long term: -20°C, the use of 50% glycerol is recommended if storing aliquots in -20°C for long term use (up to 1 year) Short term (less than 1 week): 4°C. Avoid freeze-thaw cycles.

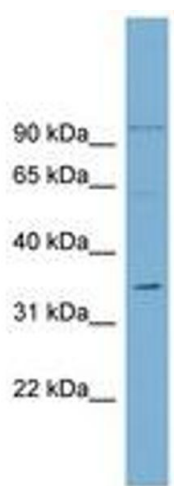


Image 1.