

Datasheet for ABIN6744108
anti-FAM83E antibody (AA 359-408)



[Go to Product page](#)

1 Image

Overview

Quantity:	100 µL
Target:	FAM83E
Binding Specificity:	AA 359-408
Reactivity:	Human, Guinea Pig, Rat
Host:	Rabbit
Clonality:	Polyclonal
Conjugate:	This FAM83E antibody is un-conjugated
Application:	Western Blotting (WB)

Product Details

Immunogen:	Synthetic peptide located between aa359-408 of human FAM83E (Q2M2I3, NP_060178). Percent identity by BLAST analysis: Human, Chimpanzee, Gorilla, Marmoset, Elephant (100%), Bovine (93%), Dog (92%), Monkey (90%), Mouse, Rat, Guinea pig (85%). Type of Immunogen: Synthetic peptide
Specificity:	Human FAM83E
Predicted Reactivity:	Percent identity by BLAST analysis: Bovine (93%) Dog (92%) Rat, Guinea pig (85%).
Purification:	Immunoaffinity purified

Target Details

Target:	FAM83E
---------	--------

Target Details

Alternative Name: [FAM83E \(FAM83E Products\)](#)

Background: Name/Gene ID: FAM83E

Synonyms: FAM83E, Protein FAM83E

Gene ID: 54854

NCBI Accession: [NP_060178](#)

UniProt: [Q2M2I3](#)

Application Details

Application Notes: Approved: WB (0.2 - 1 µg/mL)

Usage: Western Blot: Suggested dilution at 1 µg/mL in 5 % skim milk / PBS buffer, and HRP conjugated anti-Rabbit IgG should be diluted in 1: 50,000 - 100,000 as secondary antibody.

Comment: Target Species of Antibody: Human

Restrictions: For Research Use only

Handling

Format: Lyophilized

Reconstitution: Distilled water

Concentration: Lot specific

Buffer: Lyophilized from PBS with 2 % sucrose

Handling Advice: Avoid repeat freeze-thaw cycles.

Storage: 4 °C, -20 °C

Storage Comment: Long term: -20°C, the use of 50% glycerol is recommended if storing aliquots in -20°C for long term use (up to 1 year)

Short term (less than 1 week): 4°C. Avoid freeze-thaw cycles.

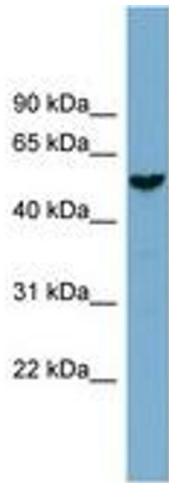


Image 1.