

Datasheet for ABIN6744115  
**anti-SLFN12 antibody (AA 35-84)**[Go to Product page](#)

## 1 Image

## Overview

Quantity:	100 µL
Target:	SLFN12
Binding Specificity:	AA 35-84
Reactivity:	Human, Monkey
Host:	Rabbit
Clonality:	Polyclonal
Conjugate:	This SLFN12 antibody is un-conjugated
Application:	Western Blotting (WB)

## Product Details

Immunogen:	Synthetic peptide located between aa35-84 of human SLFN12 (Q8IYM2, NP_060512). Percent identity by BLAST analysis: Human, Chimpanzee, Gorilla, Monkey (100%), Orangutan (85%).  Type of Immunogen: Synthetic peptide
Specificity:	Human SLFN12
Predicted Reactivity:	Percent identity by BLAST analysis: Human (100%).
Purification:	Immunoaffinity purified

## Target Details

Target:	SLFN12
Alternative Name:	SLFN12 / FLJ10260 ( <a href="#">SLFN12 Products</a> )

## Target Details

Background:	Name/Gene ID: SLFN12
	Synonyms: SLFN12, Schlafen family member 12, SLFN3, FLJ10260
Gene ID:	55106
NCBI Accession:	<a href="#">NP_060512</a>
UniProt:	<a href="#">Q8IYM2</a>

## Application Details

Application Notes:	Approved: WB (0.2 - 1 µg/mL)
	Usage: Western Blot: Suggested dilution at 1 µg/mL in 5 % skim milk / PBS buffer, and HRP conjugated anti-Rabbit IgG should be diluted in 1: 50,000 - 100,000 as secondary antibody.
Comment:	Target Species of Antibody: Human
Restrictions:	For Research Use only

## Handling

Format:	Lyophilized
Reconstitution:	Distilled water
Concentration:	Lot specific
Buffer:	Lyophilized from PBS with 2 % sucrose
Handling Advice:	Avoid repeat freeze-thaw cycles.
Storage:	4 °C, -20 °C
Storage Comment:	Long term: -20°C, the use of 50% glycerol is recommended if storing aliquots in -20°C for long term use (up to 1 year) Short term (less than 1 week): 4°C. Avoid freeze-thaw cycles.

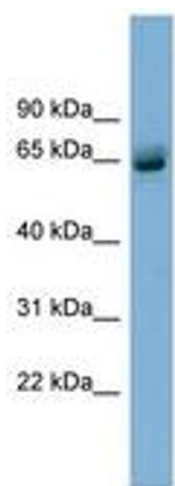


Image 1.