



[Go to Product page](#)

Datasheet for ABIN6744117
anti-Nodal antibody (AA 35-84)

1 Image

Overview

Quantity:	100 µL
Target:	Nodal (NODAL)
Binding Specificity:	AA 35-84
Reactivity:	Human, Rat, Mouse, Horse, Dog, Guinea Pig, Rabbit
Host:	Rabbit
Clonality:	Polyclonal
Conjugate:	This Nodal antibody is un-conjugated
Application:	Western Blotting (WB)

Product Details

Immunogen:	Synthetic peptide located between aa35-84 of human NODAL (Q96S42, NP_060525). Percent identity by BLAST analysis: Human, Gorilla, Gibbon, Galago, Mouse, Rat, Dog, Rabbit, Horse, Guinea pig (100%), Monkey, Elephant, Bovine (92%), Bat (85%). Type of Immunogen: Synthetic peptide
Specificity:	Human NODAL
Predicted Reactivity:	Percent identity by BLAST analysis: Human, Mouse, Rat, Dog (100%) Bovine (92%).
Purification:	Immunoaffinity purified

Target Details

Target:	Nodal (NODAL)
---------	---------------

Target Details

Alternative Name:	NODAL (NODAL Products)
Background:	Name/Gene ID: NODAL Synonyms: NODAL, HTX5, Nodal homolog, Nodal, mouse, homolog, Nodal homolog (mouse)
Gene ID:	4838
NCBI Accession:	NP_060525
UniProt:	Q96S42
Pathways:	Intracellular Steroid Hormone Receptor Signaling Pathway , Regulation of Intracellular Steroid Hormone Receptor Signaling , Stem Cell Maintenance , Tube Formation , Positive Regulation of Endopeptidase Activity

Application Details

Application Notes:	Approved: WB (0.2 - 1 µg/mL) Usage: Western Blot: Suggested dilution at 1 µg/mL in 5 % skim milk / PBS buffer, and HRP conjugated anti-Rabbit IgG should be diluted in 1: 50,000 - 100,000 as secondary antibody.
Comment:	Target Species of Antibody: Human
Restrictions:	For Research Use only

Handling

Format:	Lyophilized
Reconstitution:	Distilled water
Concentration:	Lot specific
Buffer:	Lyophilized from PBS with 2 % sucrose
Handling Advice:	Avoid repeat freeze-thaw cycles.
Storage:	4 °C, -20 °C
Storage Comment:	Long term: -20°C, the use of 50% glycerol is recommended if storing aliquots in -20°C for long term use (up to 1 year) Short term (less than 1 week): 4°C. Avoid freeze-thaw cycles.

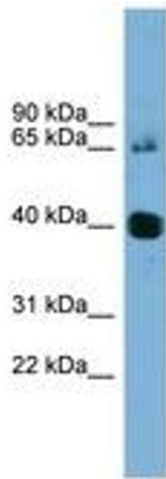


Image 1.