

Datasheet for ABIN6744124
anti-ARL8A antibody (AA 71-120)[Go to Product page](#)

1 Image

Overview

| | |
|----------------------|--|
| Quantity: | 100 µL |
| Target: | ARL8A |
| Binding Specificity: | AA 71-120 |
| Reactivity: | Human, Mouse, Rat, Cow, Horse, Rabbit, Sheep, Dog, Chicken, Monkey, Bat, Pig, Xenopus laevis |
| Host: | Rabbit |
| Clonality: | Polyclonal |
| Conjugate: | This ARL8A antibody is un-conjugated |
| Application: | Western Blotting (WB) |

Product Details

| | |
|-----------------------|--|
| Immunogen: | Synthetic peptide located between aa71-120 of human ARL8B (Q9NVJ2, NP_060654). Percent identity by BLAST analysis: Human, Chimpanzee, Gorilla, Gibbon, Monkey, Galago, Marmoset, Mouse, Rat, Sheep, Elephant, Dog, Bovine, Bat, Rabbit, Horse, Pig, Opossum, Chicken, Platypus, Lizard, Xenopus, Seabass (100%), Orangutan, Guinea pig, Zebra finch, Zebrafish (92%), Turkey, Catfish, Salmon, Beetle (85%). Type of Immunogen: Synthetic peptide |
| Specificity: | Human ARL8B / ARL8A |
| Predicted Reactivity: | Percent identity by BLAST analysis: Human, Mouse, Rat, Sheep, Dog, Bovine, Rabbit, Pig, Chicken, Xenopus (100%) Zebrafish (92%). |
| Purification: | Immunoaffinity purified |

Target Details

| | |
|-------------------|--|
| Target: | ARL8A |
| Alternative Name: | ARL8B / ARL8A (ARL8A Products) |
| Background: | Name/Gene ID: ARL8B Synonyms: ARL8B, Gie1, ARL10C |
| Gene ID: | 55207 |
| NCBI Accession: | NP_060654 |
| UniProt: | Q9NVJ2 |

Application Details

| | |
|--------------------|--|
| Application Notes: | Approved: WB (0.2 - 1 µg/mL) Usage: Western Blot: Suggested dilution at 1 µg/mL in 5 % skim milk / PBS buffer, and HRP conjugated anti-Rabbit IgG should be diluted in 1: 50,000 - 100,000 as secondary antibody. |
| Comment: | Target Species of Antibody: Human |
| Restrictions: | For Research Use only |

Handling

| | |
|------------------|---|
| Format: | Lyophilized |
| Reconstitution: | Distilled water |
| Concentration: | Lot specific |
| Buffer: | Lyophilized from PBS with 2 % sucrose |
| Handling Advice: | Avoid repeat freeze-thaw cycles. |
| Storage: | 4 °C, -20 °C |
| Storage Comment: | Long term: -20°C, the use of 50% glycerol is recommended if storing aliquots in -20°C for long term use (up to 1 year) Short term (less than 1 week): 4°C. Avoid freeze-thaw cycles. |

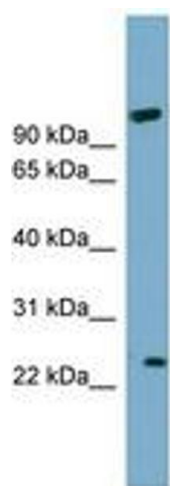


Image 1.