

Datasheet for ABIN6744125  
**anti-ARL8A antibody (AA 107-156)**[Go to Product page](#)

## 1 Image

## Overview

Quantity:	100 µL
Target:	ARL8A
Binding Specificity:	AA 107-156
Reactivity:	Human, Mouse, Rat, Cow, Horse, Rabbit, Sheep, Dog, Chicken, Guinea Pig, Zebrafish (Danio rerio), Monkey, Bat, Pig, Xenopus laevis
Host:	Rabbit
Clonality:	Polyclonal
Conjugate:	This ARL8A antibody is un-conjugated
Application:	Western Blotting (WB)

## Product Details

Immunogen:	Synthetic peptide located between aa107-156 of human ARL8B (Q9NVJ2, NP_060654). Percent identity by BLAST analysis: Human, Chimpanzee, Gorilla, Orangutan, Gibbon, Monkey, Galago, Marmoset, Mouse, Rat, Sheep, Elephant, Dog, Bovine, Bat, Rabbit, Horse, Pig, Opossum, Guinea pig, Zebra finch, Chicken, Platypus, Lizard, Xenopus, Seabass, Catfish, Zebrafish (100%), Turkey, Salmon (92%).  Type of Immunogen: Synthetic peptide
Specificity:	Human ARL8B / ARL8A
Predicted Reactivity:	Percent identity by BLAST analysis: Human, Mouse, Rat, Sheep, Dog, Bovine, Rabbit, Pig, Chicken (100%) Xenopus, Zebrafish (85%).

## Product Details

Purification: Immunoaffinity purified

## Target Details

Target: ARL8A

Alternative Name: ARL8B / ARL8A ([ARL8A Products](#))

Background: Name/Gene ID: ARL8B

Synonyms: ARL8B, Gie1, ARL10C

Gene ID: 55207

NCBI Accession: [NP\\_060654](#)

UniProt: [Q9NVJ2](#)

## Application Details

Application Notes: Approved: WB (0.2 - 1 µg/mL)

Usage: Western Blot: Suggested dilution at 1 µg/mL in 5 % skim milk / PBS buffer, and HRP conjugated anti-Rabbit IgG should be diluted in 1: 50,000 - 100,000 as secondary antibody.

Comment: Target Species of Antibody: Human

Restrictions: For Research Use only

## Handling

Format: Lyophilized

Reconstitution: Distilled water

Concentration: Lot specific

Buffer: Lyophilized from PBS with 2 % sucrose

Handling Advice: Avoid repeat freeze-thaw cycles.

Storage: 4 °C, -20 °C

Storage Comment: Long term: -20°C, the use of 50% glycerol is recommended if storing aliquots in -20°C for long term use (up to 1 year)

Short term (less than 1 week): 4°C. Avoid freeze-thaw cycles.

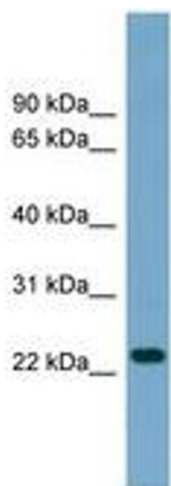


Image 1.