



[Go to Product page](#)

Datasheet for ABIN6744143
anti-CMTR2 antibody (AA 287-336)

1 Image

Overview

Quantity:	100 µL
Target:	CMTR2
Binding Specificity:	AA 287-336
Reactivity:	Human, Horse, Mouse, Rabbit, Dog, Rat, Guinea Pig, Zebrafish (Danio rerio), Monkey, Hamster, Bat, Chicken
Host:	Rabbit
Clonality:	Polyclonal
Conjugate:	This CMTR2 antibody is un-conjugated
Application:	Western Blotting (WB)

Product Details

Immunogen:	Synthetic peptide located between aa287-336 of human CMTR2 (Q8IYT2, NP_060818). Percent identity by BLAST analysis: Human, Gorilla, Orangutan, Gibbon, Monkey, Galago, Marmoset, Mouse, Rat, Hamster, Elephant, Panda, Dog, Bat, Rabbit, Horse, Opossum, Guinea pig, Turkey, Zebra finch, Chicken, Lizard (100%), Bovine, Stickleback (92%), Drosophila (85%). Type of Immunogen: Synthetic peptide
Specificity:	Human FTSJD1
Predicted Reactivity:	Percent identity by BLAST analysis: Rat, Dog, Rabbit, Guinea pig, Chicken (100%) Bovine (92%).
Purification:	Immunoaffinity purified

Target Details

Target:	CMTR2
Alternative Name:	CMTR2 / FTSJD1 (CMTR2 Products)
Background:	Name/Gene ID: CMTR2 Synonyms: CMTR2, Adrift homolog, AFT, FTSJD1, MTr2, Protein adrift homolog
Gene ID:	55783
NCBI Accession:	NP_060818
UniProt:	Q8IYT2

Application Details

Application Notes:	Approved: WB (0.2 - 1 µg/mL) Usage: Western Blot: Suggested dilution at 1 µg/mL in 5 % skim milk / PBS buffer, and HRP conjugated anti-Rabbit IgG should be diluted in 1: 50,000 - 100,000 as secondary antibody.
Comment:	Target Species of Antibody: Human
Restrictions:	For Research Use only

Handling

Format:	Lyophilized
Reconstitution:	Distilled water
Concentration:	Lot specific
Buffer:	Lyophilized from PBS with 2 % sucrose
Handling Advice:	Avoid repeat freeze-thaw cycles.
Storage:	4 °C, -20 °C
Storage Comment:	Long term: -20°C, the use of 50% glycerol is recommended if storing aliquots in -20°C for long term use (up to 1 year) Short term (less than 1 week): 4°C. Avoid freeze-thaw cycles.

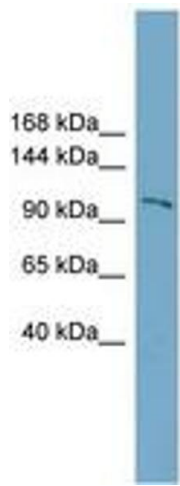


Image 1.