



[Go to Product page](#)

Datasheet for ABIN6744149

## anti-Allantoicase antibody (AA 71-120)

### 1 Image

#### Overview

Quantity:	100 µL
Target:	Allantoicase (ALLC)
Binding Specificity:	AA 71-120
Reactivity:	Human, Dog, Horse
Host:	Rabbit
Clonality:	Polyclonal
Conjugate:	This Allantoicase antibody is un-conjugated
Application:	Western Blotting (WB)

#### Product Details

Immunogen:	Synthetic peptide located between aa71-120 of human ALLC (B4DY77, NP_060906). Percent identity by BLAST analysis: Human, Gorilla, Gibbon (100%), Monkey, Galago (92%), Dog, Rabbit (84%), Horse (83%).  Type of Immunogen: Synthetic peptide
Specificity:	Human ALLC
Predicted Reactivity:	Percent identity by BLAST analysis: Human (100%) Dog (84%) Horse (83%).
Purification:	Immunoaffinity purified

#### Target Details

Target:	Allantoicase (ALLC)
---------	---------------------

## Target Details

---

Alternative Name: ALLC ([ALLC Products](#))

Background: Name/Gene ID: ALLC

Synonyms: ALLC, ALC, Allantoate amidinohydrolase, Probable allantoicase, Allantoicase

Gene ID: 55821

NCBI Accession: [NP\\_060906](#)

UniProt: [Q8N6M5](#)

## Application Details

---

Application Notes: Approved: WB (0.2 - 1 µg/mL)

Usage: Western Blot: Suggested dilution at 1 µg/mL in 5 % skim milk / PBS buffer, and HRP conjugated anti-Rabbit IgG should be diluted in 1: 50,000 - 100,000 as secondary antibody.

Comment: Target Species of Antibody: Human

Restrictions: For Research Use only

## Handling

---

Format: Lyophilized

Reconstitution: Distilled water

Concentration: Lot specific

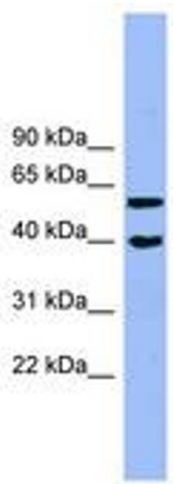
Buffer: Lyophilized from PBS with 2 % sucrose

Handling Advice: Avoid repeat freeze-thaw cycles.

Storage: 4 °C, -20 °C

Storage Comment: Long term: -20°C, the use of 50% glycerol is recommended if storing aliquots in -20°C for long term use (up to 1 year)

Short term (less than 1 week): 4°C. Avoid freeze-thaw cycles.



**Image 1.**