

Datasheet for ABIN6744150  
**anti-Proline Rich 13 antibody (AA 35-84)**[Go to Product page](#)

## 1 Image

## Overview

Quantity:	100 µL
Target:	Proline Rich 13 (PRR13)
Binding Specificity:	AA 35-84
Reactivity:	Human, Cow, Rabbit
Host:	Rabbit
Clonality:	Polyclonal
Conjugate:	This Proline Rich 13 antibody is un-conjugated
Application:	Western Blotting (WB)

## Product Details

Immunogen:	Synthetic peptide located between aa35-84 of human PRR13 (Q9NZ81, NP_060927). Percent identity by BLAST analysis: Human, Chimpanzee, Gorilla (100%), Gibbon, Monkey, Panda, Dog (92%), Pig (91%), Bovine (85%), Bat, Rabbit (84%), Galago (83%).  Type of Immunogen: Synthetic peptide
Specificity:	Human PRR13
Predicted Reactivity:	Percent identity by BLAST analysis: Human (100%) Dog (92%) Pig (91%) Bovine (85%) Rabbit (84%).
Purification:	Immunoaffinity purified

## Target Details

Target:	Proline Rich 13 (PRR13)
Alternative Name:	PRR13 ( <a href="#">PRR13 Products</a> )
Background:	Name/Gene ID: PRR13  Synonyms: PRR13, DKFZP564J157, Proline rich 13, Proline-rich protein 13, Taxane-resistance protein, TXR1
Gene ID:	54458
NCBI Accession:	<a href="#">NP_060927</a>

## Application Details

Application Notes:	Approved: WB (0.2 - 1 µg/mL)  Usage: Western Blot: Suggested dilution at 1 µg/mL in 5 % skim milk / PBS buffer, and HRP conjugated anti-Rabbit IgG should be diluted in 1: 50,000 - 100,000 as secondary antibody.
Comment:	Target Species of Antibody: Human
Restrictions:	For Research Use only

## Handling

Format:	Lyophilized
Reconstitution:	Distilled water
Concentration:	Lot specific
Buffer:	Lyophilized from PBS with 2 % sucrose
Handling Advice:	Avoid repeat freeze-thaw cycles.
Storage:	4 °C, -20 °C
Storage Comment:	Long term: -20°C, the use of 50% glycerol is recommended if storing aliquots in -20°C for long term use (up to 1 year)  Short term (less than 1 week): 4°C. Avoid freeze-thaw cycles.

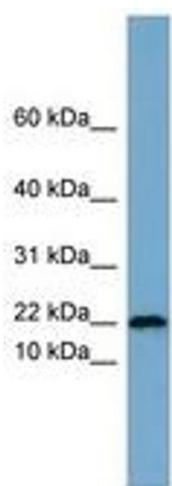


Image 1.