



[Go to Product page](#)

Datasheet for ABIN6744155
anti-GPALPP1 antibody (C-Term)

1 Image

Overview

Quantity:	100 µL
Target:	GPALPP1
Binding Specificity:	C-Term
Reactivity:	Human, Mouse, Rabbit, Rat, Dog, Horse, Guinea Pig, Bat
Host:	Rabbit
Clonality:	Polyclonal
Conjugate:	This GPALPP1 antibody is un-conjugated
Application:	Western Blotting (WB)

Product Details

Immunogen:	Synthetic peptide from C-Terminus of human GPALPP1 (Q8IXQ4, NP_061029). Percent identity by BLAST analysis: Human, Gorilla, Orangutan, Gibbon, Monkey, Galago, Mouse, Rat, Dog, Bat, Rabbit, Horse, Guinea pig, Platypus (100%), Marmoset, Hamster, Elephant, Opossum (92%), Xenopus (85%). Type of Immunogen: Synthetic peptide
Specificity:	Human KIAA1704
Predicted Reactivity:	Percent identity by BLAST analysis: Dog, Guinea pig (100%).
Purification:	Immunoaffinity purified

Target Details

Target: GPALPP1

Alternative Name: GPALPP1 / KIAA1704 ([GPALPP1 Products](#))

Background: Name/Gene ID: GPALPP1

Synonyms: GPALPP1, AD029, BA245H20.2, KIAA1704, RP11-245H20.2, LSR7

Gene ID: 55425

NCBI Accession: [NP_061029](#)

UniProt: [Q8IXQ4](#)

Application Details

Application Notes: Approved: WB (0.2 - 1 µg/mL)

Usage: Western Blot: Suggested dilution at 1 µg/mL in 5 % skim milk / PBS buffer, and HRP conjugated anti-Rabbit IgG should be diluted in 1: 50,000 - 100,000 as secondary antibody.

Comment: Target Species of Antibody: Human

Restrictions: For Research Use only

Handling

Format: Lyophilized

Reconstitution: Distilled water

Concentration: Lot specific

Buffer: Lyophilized from PBS with 2 % sucrose

Handling Advice: Avoid repeat freeze-thaw cycles.

Storage: 4 °C, -20 °C

Storage Comment: Long term: -20°C, the use of 50% glycerol is recommended if storing aliquots in -20°C for long term use (up to 1 year)

Short term (less than 1 week): 4°C. Avoid freeze-thaw cycles.

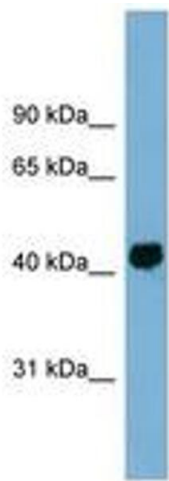


Image 1.