

Datasheet for ABIN6744157
anti-H2AFY2 antibody (AA 143-192)[Go to Product page](#)

1 Image

Overview

Quantity:	100 µL
Target:	H2AFY2
Binding Specificity:	AA 143-192
Reactivity:	Human, Mouse, Rat, Rabbit, Guinea Pig, Cow, Dog, Monkey, Pig, Bat
Host:	Rabbit
Clonality:	Polyclonal
Conjugate:	This H2AFY2 antibody is un-conjugated
Application:	Western Blotting (WB)

Product Details

Immunogen:	Synthetic peptide located between aa143-192 of human H2AFY2 (Q9P0M6, NP_061119). Percent identity by BLAST analysis: Human, Chimpanzee, Gorilla, Gibbon, Monkey, Galago, Marmoset, Mouse, Rat, Elephant, Dog, Bovine, Bat, Pig, Guinea pig (100%), Horse, Platypus (92%), Rabbit, Chicken (85%). Type of Immunogen: Synthetic peptide
Specificity:	Human H2AFY2
Predicted Reactivity:	Percent identity by BLAST analysis: Human, Mouse, Rat, Dog, Bovine, Pig (100%) Rabbit, Chicken (85%).
Purification:	Immunoaffinity purified

Target Details

Target:	H2AFY2
Alternative Name:	H2AFY2 (H2AFY2 Products)
Background:	Name/Gene ID: H2AFY2 Synonyms: H2AFY2, Core histone macroH2A2.2, Core histone macro-H2A.2, Histone macroH2A2, H2A histone family, member Y2, MH2A2, MacroH2A2
Gene ID:	55506
NCBI Accession:	NP_061119
UniProt:	Q9P0M6

Application Details

Application Notes:	Approved: WB (0.2 - 1 µg/mL) Usage: Western Blot: Suggested dilution at 1 µg/mL in 5 % skim milk / PBS buffer, and HRP conjugated anti-Rabbit IgG should be diluted in 1: 50,000 - 100,000 as secondary antibody.
Comment:	Target Species of Antibody: Human
Restrictions:	For Research Use only

Handling

Format:	Lyophilized
Reconstitution:	Distilled water
Concentration:	Lot specific
Buffer:	Lyophilized from PBS with 2 % sucrose
Handling Advice:	Avoid repeat freeze-thaw cycles.
Storage:	4 °C, -20 °C
Storage Comment:	Long term: -20°C, the use of 50% glycerol is recommended if storing aliquots in -20°C for long term use (up to 1 year) Short term (less than 1 week): 4°C. Avoid freeze-thaw cycles.

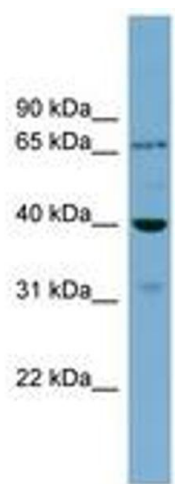


Image 1.