



[Go to Product page](#)

Datasheet for ABIN6744161
anti-KLHL9 antibody (AA 395-444)

1 Image

Overview

Quantity:	100 µL
Target:	KLHL9
Binding Specificity:	AA 395-444
Reactivity:	Human, Mouse, Rat, Cow, Dog, Pig, Rabbit, Bat, Hamster, Monkey
Host:	Rabbit
Clonality:	Polyclonal
Conjugate:	This KLHL9 antibody is un-conjugated
Application:	Western Blotting (WB)

Product Details

Immunogen:	Synthetic peptide located between aa395-444 of human KLHL9 (Q9P2J3, NP_061335). Percent identity by BLAST analysis: Human, Chimpanzee, Gorilla, Monkey, Galago, Mouse, Rat, Hamster, Panda, Dog, Bovine, Bat, Rabbit, Pig (100%), Opossum, Turkey, Zebra finch, Chicken, Xenopus, Stickleback (92%), Gibbon, Marmoset, Elephant, Horse, Guinea pig (85%). Type of Immunogen: Synthetic peptide
Specificity:	Human KLHL9
Predicted Reactivity:	Percent identity by BLAST analysis: Human, Mouse, Rat, Dog, Bovine, Rabbit, Pig (100%) Chicken (92%).
Purification:	Immunoaffinity purified

Target Details

Target:	KLHL9
Alternative Name:	KLHL9 (KLHL9 Products)
Background:	Name/Gene ID: KLHL9 Synonyms: KLHL9, Kelch-like protein 9, Kelch-like 9 (Drosophila), KIAA1354, RP11-380P16.6
Gene ID:	55958
NCBI Accession:	NP_061335
UniProt:	Q9P2J3

Application Details

Application Notes:	Approved: WB (0.2 - 1 µg/mL) Usage: Western Blot: Suggested dilution at 1 µg/mL in 5 % skim milk / PBS buffer, and HRP conjugated anti-Rabbit IgG should be diluted in 1: 50,000 - 100,000 as secondary antibody.
Comment:	Target Species of Antibody: Human
Restrictions:	For Research Use only

Handling

Format:	Lyophilized
Reconstitution:	Distilled water
Concentration:	Lot specific
Buffer:	Lyophilized from PBS with 2 % sucrose
Handling Advice:	Avoid repeat freeze-thaw cycles.
Storage:	4 °C, -20 °C
Storage Comment:	Long term: -20°C, the use of 50% glycerol is recommended if storing aliquots in -20°C for long term use (up to 1 year) Short term (less than 1 week): 4°C. Avoid freeze-thaw cycles.

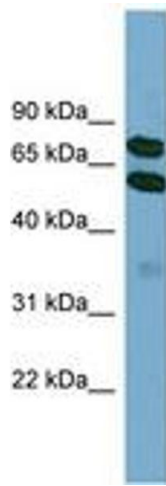


Image 1.