

Datasheet for ABIN6744165
anti-SASH3 antibody (AA 35-84)



[Go to Product page](#)

1 Image

Overview

Quantity:	100 µL
Target:	SASH3
Binding Specificity:	AA 35-84
Reactivity:	Human, Mouse, Dog, Guinea Pig, Horse, Rabbit, Rat, Bat, Monkey, Pig
Host:	Rabbit
Clonality:	Polyclonal
Conjugate:	This SASH3 antibody is un-conjugated
Application:	Western Blotting (WB)

Product Details

Immunogen:	Synthetic peptide located between aa35-84 of human SASH3 (Q8K352, NP_061863). Percent identity by BLAST analysis: Human, Chimpanzee, Gorilla, Gibbon, Monkey, Galago, Marmoset, Mouse, Rat, Elephant, Panda, Dog, Bat, Rabbit, Horse, Pig, Guinea pig (100%), Bovine, Opossum (92%), Platypus (85%), Zebra finch (83%). Type of Immunogen: Synthetic peptide
Specificity:	Human SASH3 / CXorf9
Predicted Reactivity:	Percent identity by BLAST analysis:
Purification:	Immunoaffinity purified

Target Details

Target:	SASH3
Alternative Name:	SASH3 (SASH3 Products)
Background:	Name/Gene ID: SASH3 Synonyms: SASH3, 753P9, CXorf9, HACS2, SH3D6C, SLY
Gene ID:	54440
NCBI Accession:	NP_061863
UniProt:	O75995
Pathways:	Regulation of Leukocyte Mediated Immunity , Positive Regulation of Immune Effector Process , Production of Molecular Mediator of Immune Response

Application Details

Application Notes:	Approved: WB (0.2 - 1 µg/mL) Usage: Western Blot: Suggested dilution at 1 µg/mL in 5 % skim milk / PBS buffer, and HRP conjugated anti-Rabbit IgG should be diluted in 1: 50,000 - 100,000 as secondary antibody.
Comment:	Target Species of Antibody: Human
Restrictions:	For Research Use only

Handling

Format:	Lyophilized
Reconstitution:	Distilled water
Concentration:	Lot specific
Buffer:	Lyophilized from PBS with 2 % sucrose
Handling Advice:	Avoid repeat freeze-thaw cycles.
Storage:	4 °C,-20 °C
Storage Comment:	Long term: -20°C, the use of 50% glycerol is recommended if storing aliquots in -20°C for long term use (up to 1 year) Short term (less than 1 week): 4°C. Avoid freeze-thaw cycles.

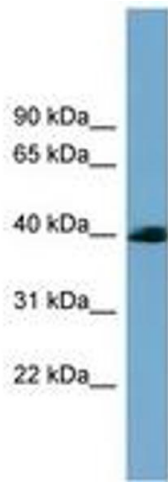


Image 1.