

Datasheet for ABIN6744167

anti-Amyloid beta (A4) Precursor Protein-Binding, Family B, Member 1 Interacting Protein (APBB1IP) (AA 71-120) antibody[Go to Product page](#)**1** Image

Overview

Quantity:	100 µL
Target:	Amyloid beta (A4) Precursor Protein-Binding, Family B, Member 1 Interacting Protein (APBB1IP)
Binding Specificity:	AA 71-120
Reactivity:	Human, Mouse, Rat, Cow, Rabbit, Dog, Guinea Pig, Bat
Host:	Rabbit
Clonality:	Polyclonal
Conjugate:	Un-conjugated
Application:	Western Blotting (WB)

Product Details

Immunogen:	Synthetic peptide located between aa71-120 of human APBB1IP (Q7Z5R6, NP_061916). Percent identity by BLAST analysis: Human, Gorilla, Gibbon, Monkey, Galago, Mouse, Rat, Panda, Dog, Bovine, Bat, Rabbit, Guinea pig (100%), Marmoset, Horse, Opossum (92%), Platypus (85%). Type of Immunogen: Synthetic peptide
Specificity:	Human APBB1IP / RIAM
Predicted Reactivity:	Percent identity by BLAST analysis: Human, Mouse, Rat, Dog, Bovine, Rabbit, Guinea pig (100%) Horse (92%).
Purification:	Immunoaffinity purified

Target Details

Target:	Amyloid beta (A4) Precursor Protein-Binding, Family B, Member 1 Interacting Protein (APBB1IP)
Alternative Name:	APBB1IP / RIAM (APBB1IP Products)
Background:	Name/Gene ID: APBB1IP Synonyms: APBB1IP, APBB1-interacting protein 1, INAG1, PREL-1, Proline-rich protein 73, Proline-rich EVH1 ligand 1, RARP1, RARP-1, RIAM, PREL1, Proline rich EVH1 ligand 1
Gene ID:	54518
NCBI Accession:	NP_061916
UniProt:	Q7Z5R6

Application Details

Application Notes:	Approved: WB (0.2 - 1 µg/mL) Usage: Western Blot: Suggested dilution at 1 µg/mL in 5 % skim milk / PBS buffer, and HRP conjugated anti-Rabbit IgG should be diluted in 1: 50,000 - 100,000 as secondary antibody.
Comment:	Target Species of Antibody: Human
Restrictions:	For Research Use only

Handling

Format:	Lyophilized
Reconstitution:	Distilled water
Concentration:	Lot specific
Buffer:	Lyophilized from PBS with 2 % sucrose
Handling Advice:	Avoid repeat freeze-thaw cycles.
Storage:	4 °C, -20 °C
Storage Comment:	Long term: -20°C, the use of 50% glycerol is recommended if storing aliquots in -20°C for long term use (up to 1 year) Short term (less than 1 week): 4°C. Avoid freeze-thaw cycles.

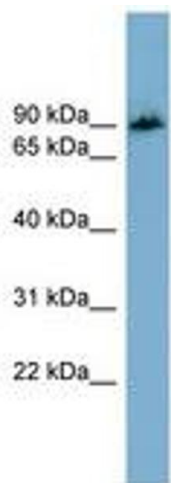


Image 1.