

Datasheet for ABIN6744169
anti-EXOC6 antibody (AA 287-336)



[Go to Product page](#)

1 Image

Overview

Quantity:	100 µL
Target:	EXOC6
Binding Specificity:	AA 287-336
Reactivity:	Human, Mouse, Rat, Cow, Dog, Guinea Pig, Rabbit, Zebrafish (Danio rerio), Horse, Bat, Monkey, Pig, Chicken, Xenopus laevis
Host:	Rabbit
Clonality:	Polyclonal
Conjugate:	This EXOC6 antibody is un-conjugated
Application:	Western Blotting (WB)

Product Details

Immunogen:	Synthetic peptide located between aa287-336 of human EXOC6 (Q8TAG9, NP_061926). Percent identity by BLAST analysis: Human, Chimpanzee, Gorilla, Orangutan, Gibbon, Monkey, Galago, Marmoset, Mouse, Rat, Elephant, Panda, Dog, Bovine, Bat, Rabbit, Horse, Pig, Opossum, Guinea pig, Turkey, Chicken, Platypus, Xenopus, Stickleback, Zebrafish (100%), Zebra finch (90%). Type of Immunogen: Synthetic peptide
Specificity:	Human EXOC6
Predicted Reactivity:	Percent identity by BLAST analysis: Human, Mouse, Rat, Dog, Bovine, Rabbit, Horse, Pig, Guinea pig, Chicken, Zebrafish (100%).
Purification:	Immunoaffinity purified

Target Details

Target:	EXOC6
Alternative Name:	EXOC6 / SEC15 (EXOC6 Products)
Background:	Name/Gene ID: EXOC6 Synonyms: EXOC6, EXOC6A, Exocyst complex component 6, SEC15, SEC15A, SEC15L1, Sec15p, SEC15-like protein 1, SEC15L3, SEC15-like 1, SEC15-like 1 (<i>S. cerevisiae</i>), SEC15-like protein 3, SEC15L
Gene ID:	54536
NCBI Accession:	NP_061926
UniProt:	Q8TAG9
Pathways:	Peptide Hormone Metabolism , Synaptic Vesicle Exocytosis

Application Details

Application Notes:	Approved: WB (0.2 - 1 µg/mL) Usage: Western Blot: Suggested dilution at 1 µg/mL in 5 % skim milk / PBS buffer, and HRP conjugated anti-Rabbit IgG should be diluted in 1: 50,000 - 100,000 as secondary antibody.
Comment:	Target Species of Antibody: Human
Restrictions:	For Research Use only

Handling

Format:	Lyophilized
Reconstitution:	Distilled water
Concentration:	Lot specific
Buffer:	Lyophilized from PBS with 2 % sucrose
Handling Advice:	Avoid repeat freeze-thaw cycles.
Storage:	4 °C, -20 °C
Storage Comment:	Long term: -20°C, the use of 50% glycerol is recommended if storing aliquots in -20°C for long term use (up to 1 year) Short term (less than 1 week): 4°C. Avoid freeze-thaw cycles.

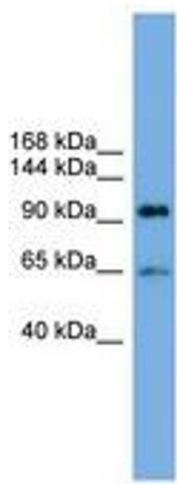


Image 1.