

Datasheet for ABIN6744171
anti-Cyclin J antibody (AA 71-120)[Go to Product page](#)

1 Image

Overview

Quantity:	100 µL
Target:	Cyclin J (CCNJ)
Binding Specificity:	AA 71-120
Reactivity:	Human, Guinea Pig, Mouse, Rat, Cow, Dog, Horse, Rabbit, Chicken, Monkey, Pig
Host:	Rabbit
Clonality:	Polyclonal
Conjugate:	This Cyclin J antibody is un-conjugated
Application:	Western Blotting (WB)

Product Details

Immunogen:	Synthetic peptide located between aa71-120 of human CCNJ (Q5T5M9, NP_061957). Percent identity by BLAST analysis: Human, Chimpanzee, Gorilla, Gibbon, Monkey, Galago, Marmoset, Mouse, Rat, Elephant, Panda, Dog, Bovine, Rabbit, Horse, Pig, Opossum, Guinea pig, Turkey, Zebra finch, Chicken (100%), Platypus, Stickleback (92%), Bat, Xenopus (85%). Type of Immunogen: Synthetic peptide
Specificity:	Human CCNJ / Cyclin J
Predicted Reactivity:	Percent identity by BLAST analysis: Human, Mouse, Rat, Dog, Bovine, Rabbit, Horse, Pig, Guinea pig, Chicken (100%) Xenopus (85%).
Purification:	Immunoaffinity purified

Target Details

Target:	Cyclin J (CCNJ)
Alternative Name:	CCNJ (CCNJ Products)
Background:	Name/Gene ID: CCNJ Synonyms: CCNJ, BA690P14.1, Cyclin-J, Cyclin J
Gene ID:	54619
NCBI Accession:	NP_061957
UniProt:	Q5T5M9

Application Details

Application Notes:	Approved: WB (0.2 - 1 µg/mL) Usage: Western Blot: Suggested dilution at 1 µg/mL in 5 % skim milk / PBS buffer, and HRP conjugated anti-Rabbit IgG should be diluted in 1: 50,000 - 100,000 as secondary antibody.
Comment:	Target Species of Antibody: Human
Restrictions:	For Research Use only

Handling

Format:	Lyophilized
Reconstitution:	Distilled water
Concentration:	Lot specific
Buffer:	Lyophilized from PBS with 2 % sucrose
Handling Advice:	Avoid repeat freeze-thaw cycles.
Storage:	4 °C, -20 °C
Storage Comment:	Long term: -20°C, the use of 50% glycerol is recommended if storing aliquots in -20°C for long term use (up to 1 year) Short term (less than 1 week): 4°C. Avoid freeze-thaw cycles.

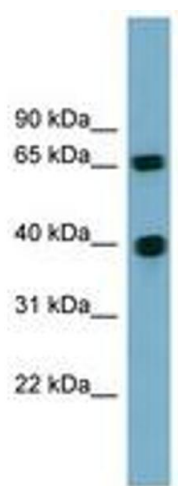


Image 1.