



[Go to Product page](#)

Datasheet for ABIN6744172
anti-LIN37 antibody (AA 71-120)

1 Image

Overview

Quantity:	100 µL
Target:	LIN37
Binding Specificity:	AA 71-120
Reactivity:	Human, Mouse, Dog, Guinea Pig, Horse, Rabbit, Rat, Bat, Monkey, Pig
Host:	Rabbit
Clonality:	Polyclonal
Conjugate:	This LIN37 antibody is un-conjugated
Application:	Western Blotting (WB)

Product Details

Immunogen:	Synthetic peptide located between aa71-120 of human LIN37 (Q96GY3, NP_061977). Percent identity by BLAST analysis: Human, Chimpanzee, Gorilla, Gibbon, Monkey, Galago, Mouse, Rat, Panda, Dog, Bat, Rabbit, Horse, Pig, Guinea pig (100%), Elephant, Bovine (92%). Type of Immunogen: Synthetic peptide
Specificity:	Human LIN37
Predicted Reactivity:	Percent identity by BLAST analysis: Human, Mouse, Rat, Dog, Pig (100%) Bovine (92%).
Purification:	Immunoaffinity purified

Target Details

Target:	LIN37
---------	-------

Target Details

Alternative Name: [LIN37 \(LIN37 Products\)](#)

Background: Name/Gene ID: LIN37

Synonyms: LIN37, F25965, Lin-37 homolog (C. elegans), Protein lin-37 homolog, ZK418.4, Antolefinin, Lin-37, Protein F25965

Gene ID: 55957

NCBI Accession: [NP_061977](#)

UniProt: [Q96GY3](#)

Pathways: [Cell Division Cycle, Mitotic G1-G1/S Phases](#)

Application Details

Application Notes: Approved: WB (0.2 - 1 µg/mL)

Usage: Western Blot: Suggested dilution at 1 µg/mL in 5 % skim milk / PBS buffer, and HRP conjugated anti-Rabbit IgG should be diluted in 1: 50,000 - 100,000 as secondary antibody.

Comment: Target Species of Antibody: Human

Restrictions: For Research Use only

Handling

Format: Lyophilized

Reconstitution: Distilled water

Concentration: Lot specific

Buffer: Lyophilized from PBS with 2 % sucrose

Handling Advice: Avoid repeat freeze-thaw cycles.

Storage: 4 °C, -20 °C

Storage Comment: Long term: -20°C, the use of 50% glycerol is recommended if storing aliquots in -20°C for long term use (up to 1 year)

Short term (less than 1 week): 4°C. Avoid freeze-thaw cycles.

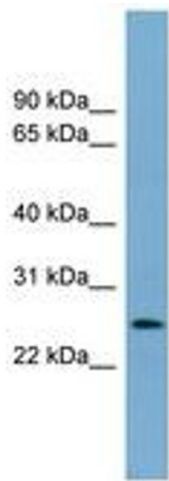


Image 1.