



Datasheet for ABIN6744183
anti-NT5M antibody (AA 143-192)



[Go to Product page](#)

1 Image

Overview

Quantity:	100 µL
Target:	NT5M
Binding Specificity:	AA 143-192
Reactivity:	Human, Mouse, Rat, Dog, Guinea Pig, Horse, Monkey, Chicken
Host:	Rabbit
Clonality:	Polyclonal
Conjugate:	This NT5M antibody is un-conjugated
Application:	Western Blotting (WB)

Product Details

Immunogen:	Synthetic peptide located between aa143-192 of human NT5M (Q9NPB1, NP_064586). Percent identity by BLAST analysis: Human, Chimpanzee, Marmoset, Mouse, Rat, Panda, Dog, Horse, Opossum, Turkey, Zebra finch, Chicken, Platypus (100%), Elephant, Bovine, Rabbit, Pig, Xenopus (92%), Monkey (87%), Guinea pig (80%). Type of Immunogen: Synthetic peptide
Specificity:	Human NT5M
Predicted Reactivity:	Percent identity by BLAST analysis: Human, Mouse, Rat, Dog, Horse, Chicken (100%) Bovine, Rabbit (92%) Guinea pig (80%).
Purification:	Immunoaffinity purified

Target Details

Target: NT5M

Alternative Name: NT5M ([NT5M Products](#))

Background: Name/Gene ID: NT5M

Synonyms: NT5M, 5(3)-deoxyribonucleotidase, 5 nucleotidase, mitochondrial, Deoxy-5-nucleotidase 2, DNT-2, MdN, Mitochondrial 5 nucleotidase, DNT2

Gene ID: 56953

NCBI Accession: [NP_064586](#)

UniProt: [Q9NPB1](#)

Application Details

Application Notes: Approved: WB (0.2 - 1 µg/mL)

Usage: Western Blot: Suggested dilution at 1 µg/mL in 5 % skim milk / PBS buffer, and HRP conjugated anti-Rabbit IgG should be diluted in 1: 50,000 - 100,000 as secondary antibody.

Comment: Target Species of Antibody: Human

Restrictions: For Research Use only

Handling

Format: Lyophilized

Reconstitution: Distilled water

Concentration: Lot specific

Buffer: Lyophilized from PBS with 2 % sucrose

Handling Advice: Avoid repeat freeze-thaw cycles.

Storage: 4 °C, -20 °C

Storage Comment: Long term: -20°C, the use of 50% glycerol is recommended if storing aliquots in -20°C for long term use (up to 1 year)

Short term (less than 1 week): 4°C. Avoid freeze-thaw cycles.

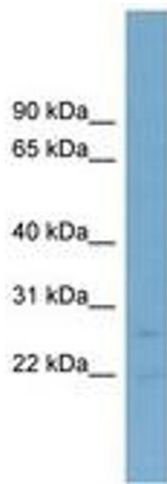


Image 1.