



[Go to Product page](#)

Datasheet for ABIN6744195
anti-ASPHD2 antibody (AA 107-156)

1 Image

Overview

Quantity:	100 µL
Target:	ASPHD2
Binding Specificity:	AA 107-156
Reactivity:	Human, Cow, Dog, Guinea Pig, Horse, Mouse, Rabbit, Rat, Bat, Chicken, Monkey, Pig, Xenopus laevis
Host:	Rabbit
Clonality:	Polyclonal
Conjugate:	This ASPHD2 antibody is un-conjugated
Application:	Western Blotting (WB)

Product Details

Immunogen:	Synthetic peptide located between aa107-156 of human ASPHD2 (Q6ICH7, NP_065170). Percent identity by BLAST analysis: Human, Chimpanzee, Gorilla, Gibbon, Monkey, Galago, Marmoset, Mouse, Rat, Elephant, Panda, Dog, Bovine, Bat, Rabbit, Horse, Pig, Opossum, Guinea pig, Zebra finch, Chicken, Xenopus (100%), Zebrafish (85%). Type of Immunogen: Synthetic peptide
Specificity:	Human ASPHD2
Predicted Reactivity:	Percent identity by BLAST analysis: Dog, Bovine, Rabbit, Horse, Pig, Guinea pig, Chicken (100%).
Purification:	Immunoaffinity purified

Target Details

Target:	ASPHD2
Alternative Name:	ASPHD2 (ASPHD2 Products)
Background:	Name/Gene ID: ASPHD2 Synonyms: ASPHD2
Gene ID:	57168
NCBI Accession:	NP_065170
UniProt:	Q6ICH7

Application Details

Application Notes:	Approved: WB (0.2 - 1 µg/mL) Usage: Western Blot: Suggested dilution at 1 µg/mL in 5 % skim milk / PBS buffer, and HRP conjugated anti-Rabbit IgG should be diluted in 1: 50,000 - 100,000 as secondary antibody.
Comment:	Target Species of Antibody: Human
Restrictions:	For Research Use only

Handling

Format:	Lyophilized
Reconstitution:	Distilled water
Concentration:	Lot specific
Buffer:	Lyophilized from PBS with 2 % sucrose
Handling Advice:	Avoid repeat freeze-thaw cycles.
Storage:	4 °C, -20 °C
Storage Comment:	Long term: -20°C, the use of 50% glycerol is recommended if storing aliquots in -20°C for long term use (up to 1 year) Short term (less than 1 week): 4°C. Avoid freeze-thaw cycles.

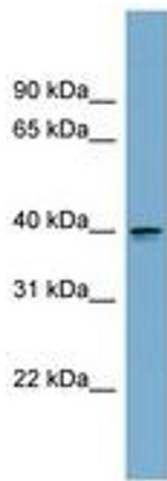


Image 1.