

Datasheet for ABIN6744196
anti-CAMK1G antibody (AA 35-84)[Go to Product page](#)

1 Image

Overview

Quantity:	100 µL
Target:	CAMK1G
Binding Specificity:	AA 35-84
Reactivity:	Human, Mouse, Rat, Horse, Rabbit, Dog, Guinea Pig, Cow, Monkey, Pig, Bat
Host:	Rabbit
Clonality:	Polyclonal
Conjugate:	This CAMK1G antibody is un-conjugated
Application:	Western Blotting (WB)

Product Details

Immunogen:	Synthetic peptide located between aa35-84 of human CAMK1G (Q96NX5, NP_065172). Percent identity by BLAST analysis: Human, Chimpanzee, Gorilla, Gibbon, Monkey, Galago, Marmoset, Mouse, Rat, Elephant, Panda, Dog, Bovine, Bat, Rabbit, Horse, Pig, Opossum, Guinea pig (100%), Turkey, Zebra finch, Chicken (85%). Type of Immunogen: Synthetic peptide
Specificity:	Human CAMK1G / CaMKI gamma
Predicted Reactivity:	Percent identity by BLAST analysis: Human, Mouse, Dog, Bovine, Rabbit, Horse, Pig, Guinea pig (100%) Chicken (85%).
Purification:	Immunoaffinity purified

Target Details

Target:	CAMK1G
Alternative Name:	CAMK1G / CaMKI gamma (CAMK1G Products)
Background:	Name/Gene ID: CAMK1G Subfamily: CAMK1 Family: Protein Kinase Synonyms: CAMK1G, CaM kinase IG, CaMK-like CREB kinase III, CaM kinase I gamma, CaM-KI gamma, CLICK III, CLICK3, CaMK I gamma, Gamma CaMK I, VWS1, CaMKI gamma, CaMKIG, CLICKIII, DJ272L16.1
Gene ID:	57172
NCBI Accession:	NP_065172
UniProt:	Q96NX5

Application Details

Application Notes:	Approved: WB (0.2 - 1 µg/mL) Usage: Western Blot: Suggested dilution at 1 µg/mL in 5 % skim milk / PBS buffer, and HRP conjugated anti-Rabbit IgG should be diluted in 1: 50,000 - 100,000 as secondary antibody.
Comment:	Target Species of Antibody: Human
Restrictions:	For Research Use only

Handling

Format:	Lyophilized
Reconstitution:	Distilled water
Concentration:	Lot specific
Buffer:	Lyophilized from PBS with 2 % sucrose
Handling Advice:	Avoid repeat freeze-thaw cycles.
Storage:	4 °C, -20 °C
Storage Comment:	Long term: -20°C, the use of 50% glycerol is recommended if storing aliquots in -20°C for long term use (up to 1 year)

Handling

Short term (less than 1 week): 4°C. Avoid freeze-thaw cycles.

Images

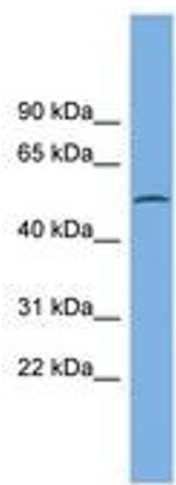


Image 1.