



[Go to Product page](#)

Datasheet for ABIN6744206

anti-**PLEKHA1** antibody (AA 107-156)

1 Image

Overview

Quantity:	100 µL
Target:	PLEKHA1
Binding Specificity:	AA 107-156
Reactivity:	Human, Mouse, Monkey
Host:	Rabbit
Clonality:	Polyclonal
Conjugate:	This PLEKHA1 antibody is un-conjugated
Application:	Western Blotting (WB)

Product Details

Immunogen:	Synthetic peptide located between aa107-156 of human PLEKHA1 (Q9HB21, NP_067635). Percent identity by BLAST analysis: Human, Chimpanzee, Gorilla, Orangutan, Gibbon, Monkey, Marmoset (100%), Rat, Elephant, Panda, Dog, Horse, Guinea pig (92%), Rabbit, Pig (91%), Mouse (85%). Type of Immunogen: Synthetic peptide
Specificity:	Human PLEKHA1
Predicted Reactivity:	Percent identity by BLAST analysis: Human (100%) Rat, Dog, Horse, Guinea pig (92%) Rabbit, Pig (91%) Mouse (85%).
Purification:	Immunoaffinity purified

Target Details

Target:	PLEKHA1
Alternative Name:	PLEKHA1 (PLEKHA1 Products)
Background:	Name/Gene ID: PLEKHA1 Synonyms: PLEKHA1, TAPP-1, TAPP1
Gene ID:	59338
NCBI Accession:	NP_067635
UniProt:	Q9HB21
Pathways:	Platelet-derived growth Factor Receptor Signaling

Application Details

Application Notes:	Approved: WB (0.2 - 1 µg/mL) Usage: Western Blot: Suggested dilution at 1 µg/mL in 5 % skim milk / PBS buffer, and HRP conjugated anti-Rabbit IgG should be diluted in 1: 50,000 - 100,000 as secondary antibody.
Comment:	Target Species of Antibody: Human
Restrictions:	For Research Use only

Handling

Format:	Lyophilized
Reconstitution:	Distilled water
Concentration:	Lot specific
Buffer:	Lyophilized from PBS with 2 % sucrose
Handling Advice:	Avoid repeat freeze-thaw cycles.
Storage:	4 °C,-20 °C
Storage Comment:	Long term: -20°C, the use of 50% glycerol is recommended if storing aliquots in -20°C for long term use (up to 1 year) Short term (less than 1 week): 4°C. Avoid freeze-thaw cycles.

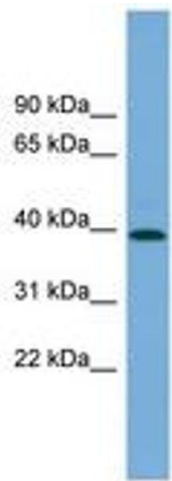


Image 1.