



[Go to Product page](#)

Datasheet for ABIN6744214  
**anti-PPM1A antibody (AA 107-156)**

1 Image

Overview

Quantity:	100 µL
Target:	PPM1A
Binding Specificity:	AA 107-156
Reactivity:	Human, Mouse, Rat, Cow, Rabbit, Dog, Guinea Pig, Horse, Pig, Chicken, Hamster, Bat, Xenopus laevis
Host:	Rabbit
Clonality:	Polyclonal
Application:	Western Blotting (WB)

Product Details

Immunogen:	Synthetic peptide located between aa107-156 of human PPM1A (P35813-2, NP_808820). Percent identity by BLAST analysis: Human, Chimpanzee, Gorilla, Orangutan, Gibbon, Monkey, Galago, Mouse, Rat, Hamster, Elephant, Panda, Dog, Bovine, Bat, Rabbit, Horse, Pig, Opossum, Guinea pig, Turkey, Zebra finch, Chicken, Platypus, Xenopus (100%), Zebrafish (93%), Marmoset, Stickleback (92%).  Type of Immunogen: Synthetic peptide
Specificity:	Human PPM1A
Predicted Reactivity:	Percent identity by BLAST analysis: Human, Mouse, Rat, Dog, Bovine, Rabbit, Pig, Guinea pig, Chicken, Xenopus (100%) Zebrafish (93%).
Purification:	Immunoaffinity purified

## Target Details

---

Target:	PPM1A
Alternative Name:	PPM1A / PP2CA ( <a href="#">PPM1A Products</a> )
Background:	Name/Gene ID: PPM1A Subfamily: PP2C Family: Protein Phosphatase  Synonyms: PPM1A, PP2Calpha, Protein phosphatase 1A, Protein phosphatase 2C alpha, Protein phosphatase 1A, PP2CA, PPPM1A, PP2C-ALPHA
Gene ID:	5494
NCBI Accession:	<a href="#">NP_808820</a>
UniProt:	<a href="#">P35813</a>

## Application Details

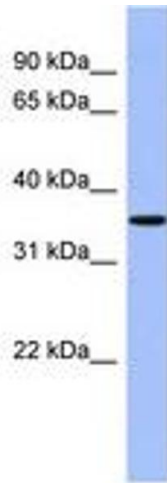
---

Application Notes:	Approved: WB (0.2 - 1 µg/mL)  Usage: Western Blot: Suggested dilution at 1 µg/mL in 5 % skim milk / PBS buffer, and HRP conjugated anti-Rabbit IgG should be diluted in 1: 50,000 - 100,000 as secondary antibody.
Comment:	Target Species of Antibody: Human
Restrictions:	For Research Use only

## Handling

---

Format:	Lyophilized
Reconstitution:	Distilled water
Concentration:	Lot specific
Buffer:	Lyophilized from PBS with 2 % sucrose
Handling Advice:	Avoid repeat freeze-thaw cycles.
Storage:	4 °C, -20 °C
Storage Comment:	Long term: -20°C, the use of 50% glycerol is recommended if storing aliquots in -20°C for long term use (up to 1 year) Short term (less than 1 week): 4°C. Avoid freeze-thaw cycles.



**Image 1.**