

Datasheet for ABIN6744219
anti-RNH1 antibody (AA 359-408)



[Go to Product page](#)

1 Image

Overview

Quantity:	100 µL
Target:	RNH1
Binding Specificity:	AA 359-408
Reactivity:	Human, Rat, Cow, Monkey
Host:	Rabbit
Clonality:	Polyclonal
Conjugate:	This RNH1 antibody is un-conjugated
Application:	Western Blotting (WB)

Product Details

Immunogen:	Synthetic peptide located between aa359-408 of human RNH1 (P13489, NP_976321). Percent identity by BLAST analysis: Human, Chimpanzee, Gorilla, Gibbon, Baboon, Monkey, Galago, Rat (100%), Mouse, Dog, Horse, Pig, Guinea pig (92%), Hamster, Bovine (85%). Type of Immunogen: Synthetic peptide
Specificity:	Human RNH1
Predicted Reactivity:	Percent identity by BLAST analysis: Human (100%) Mouse, Dog, Guinea pig (92%) Bovine (85%).
Purification:	Immunoaffinity purified

Target Details

Target:	RNH1
---------	------

Target Details

Alternative Name: [RNH1 \(RNH1 Products\)](#)

Background: Name/Gene ID: RNH1

Synonyms: RNH1, Placental RNase inhibitor, PRI, RAI, Ribonuclease inhibitor, RNH

Gene ID: 6050

NCBI Accession: [NP_976321](#)

UniProt: [P13489](#)

Application Details

Application Notes: Approved: WB (0.2 - 1 µg/mL)

Usage: Western Blot: Suggested dilution at 1 µg/mL in 5 % skim milk / PBS buffer, and HRP conjugated anti-Rabbit IgG should be diluted in 1: 50,000 - 100,000 as secondary antibody.

Comment: Target Species of Antibody: Human

Restrictions: For Research Use only

Handling

Format: Lyophilized

Reconstitution: Distilled water

Concentration: Lot specific

Buffer: Lyophilized from PBS with 2 % sucrose

Handling Advice: Avoid repeat freeze-thaw cycles.

Storage: 4 °C, -20 °C

Storage Comment: Long term: -20°C, the use of 50% glycerol is recommended if storing aliquots in -20°C for long term use (up to 1 year)

Short term (less than 1 week): 4°C. Avoid freeze-thaw cycles.

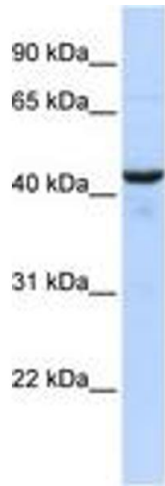


Image 1.