



[Go to Product page](#)

Datasheet for ABIN6744223

anti-EVX1 antibody (AA 36-85)

1 Image

Overview

Quantity:	100 µL
Target:	EVX1
Binding Specificity:	AA 36-85
Reactivity:	Human, Mouse, Rat, Cow, Guinea Pig, Dog, Monkey, Pig
Host:	Rabbit
Clonality:	Polyclonal
Conjugate:	This EVX1 antibody is un-conjugated
Application:	Western Blotting (WB)

Product Details

Immunogen:	Synthetic peptide located between aa36-85 of human EVX1 (P49640, NP_001980). Percent identity by BLAST analysis: Human, Gorilla, Monkey, Shrew (100%), Gibbon, Galago, Elephant, Rabbit, Horse, Armadillo, Platypus (92%), Marmoset, Hamster, Dog, Bovine, Pig, Guinea pig (85%), Mouse, Rat (78%). Type of Immunogen: Synthetic peptide
Specificity:	Human EVX1
Predicted Reactivity:	Percent identity by BLAST analysis: Human (100%) Rabbit (92%) Dog, Bovine, Pig, Guinea pig (85%).
Purification:	Immunoaffinity purified

Target Details

Target:	EVX1
Alternative Name:	EVX1 (EVX1 Products)
Background:	Name/Gene ID: EVX1 Synonyms: EVX1, Even-skipped homeo box 1, EVX-1, Even-skipped homeobox 1
Gene ID:	2128
NCBI Accession:	NP_001980
UniProt:	P49640

Application Details

Application Notes:	Approved: WB (0.2 - 1 µg/mL) Usage: Western Blot: Suggested dilution at 1 µg/mL in 5 % skim milk / PBS buffer, and HRP conjugated anti-Rabbit IgG should be diluted in 1: 50,000 - 100,000 as secondary antibody.
Comment:	Target Species of Antibody: Human
Restrictions:	For Research Use only

Handling

Format:	Lyophilized
Reconstitution:	Distilled water
Concentration:	Lot specific
Buffer:	Lyophilized from PBS with 2 % sucrose
Handling Advice:	Avoid repeat freeze-thaw cycles.
Storage:	4 °C, -20 °C
Storage Comment:	Long term: -20°C, the use of 50% glycerol is recommended if storing aliquots in -20°C for long term use (up to 1 year) Short term (less than 1 week): 4°C. Avoid freeze-thaw cycles.

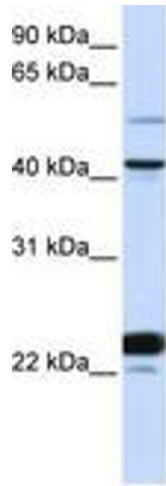


Image 1.