



[Go to Product page](#)

Datasheet for ABIN6744235

## anti-Retinoblastoma Protein (Rb) antibody (C-Term)

### 1 Image

#### Overview

Quantity:	100 µL
Target:	Retinoblastoma Protein (Rb) (Rb Protein)
Binding Specificity:	C-Term
Reactivity:	Human, Cow, Dog, Pig, Bat, Guinea Pig
Host:	Rabbit
Clonality:	Polyclonal
Conjugate:	This Retinoblastoma Protein (Rb) antibody is un-conjugated
Application:	Western Blotting (WB)

#### Product Details

Immunogen:	Synthetic peptide from C-Terminus of human RB1 (P06400, NP_000312). Percent identity by BLAST analysis: Human, Chimpanzee, Gorilla, Gibbon, Monkey, Galago, Panda, Dog, Bovine, Bat, Pig, Opossum, Guinea pig, Platypus (100%), Marmoset, Mouse, Rat, Elephant, Rabbit, Horse, Zebra finch (92%), Turkey, Chicken (85%).  Type of Immunogen: Synthetic peptide
Specificity:	Human RB1
Predicted Reactivity:	Percent identity by BLAST analysis: Human, Dog, Bovine, Pig, Guinea pig (100%) Mouse, Rabbit, Horse (92%) Chicken (85%).
Purification:	Immunoaffinity purified

## Target Details

---

Target:	Retinoblastoma Protein (Rb) (Rb Protein)
Alternative Name:	RB1 / Retinoblastoma / RB ( <a href="#">Rb Protein Products</a> )
Background:	Name/Gene ID: RB1  Synonyms: RB1, p105-Rb, Osteosarcoma, PRb, Retinoblastoma, Retinoblastoma 1, OSRC, RB, Pp110
Gene ID:	5925
NCBI Accession:	<a href="#">NP_000312</a>
UniProt:	<a href="#">P06400</a>
Pathways:	<a href="#">Mitotic G1-G1/S Phases</a>

## Application Details

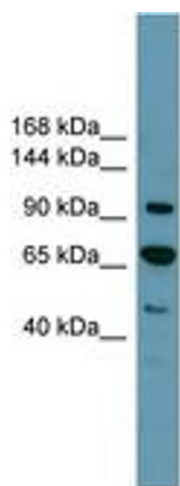
---

Application Notes:	Approved: WB (0.2 - 1 µg/mL)  Usage: Western Blot: Suggested dilution at 1 µg/mL in 5 % skim milk / PBS buffer, and HRP conjugated anti-Rabbit IgG should be diluted in 1: 50,000 - 100,000 as secondary antibody.
Comment:	Target Species of Antibody: Human
Restrictions:	For Research Use only

## Handling

---

Format:	Lyophilized
Reconstitution:	Distilled water
Concentration:	Lot specific
Buffer:	Lyophilized from PBS with 2 % sucrose
Handling Advice:	Avoid repeat freeze-thaw cycles.
Storage:	4 °C,-20 °C
Storage Comment:	Long term: -20°C, the use of 50% glycerol is recommended if storing aliquots in -20°C for long term use (up to 1 year)  Short term (less than 1 week): 4°C. Avoid freeze-thaw cycles.



**Image 1.**