



[Go to Product page](#)

Datasheet for ABIN6744246
anti-EEA1 antibody (AA 1188-1237)

1 Image

Overview

Quantity:	100 µL
Target:	EEA1
Binding Specificity:	AA 1188-1237
Reactivity:	Human, Dog, Horse, Rabbit, Cow, Monkey
Host:	Rabbit
Clonality:	Polyclonal
Conjugate:	This EEA1 antibody is un-conjugated
Application:	Western Blotting (WB)

Product Details

Immunogen:	Synthetic peptide located between aa1188-1237 of human EEA1 (Q15075, NP_003557). Percent identity by BLAST analysis: Human, Chimpanzee, Gorilla, Gibbon, Monkey, Marmoset (100%), Galago, Elephant, Panda, Bat, Turkey, Chicken (85%), Xenopus (83%). Type of Immunogen: Synthetic peptide
Specificity:	Human EEA1
Predicted Reactivity:	Percent identity by BLAST analysis: Human (100%) Chicken (85%).
Purification:	Immunoaffinity purified

Target Details

Target:	EEA1
---------	------

Target Details

Alternative Name: [EEA1 \(EEA1 Products\)](#)

Background: Name/Gene ID: EEA1

Synonyms: EEA1, MST105, MSTP105, ZFYVE2, Early endosome antigen 1

Gene ID: 8411

NCBI Accession: [NP_003557](#)

UniProt: [Q15075](#)

Pathways: [Toll-Like Receptors Cascades](#)

Application Details

Application Notes: Approved: WB (0.2 - 1 µg/mL)

Usage: Western Blot: Suggested dilution at 1 µg/mL in 5 % skim milk / PBS buffer, and HRP conjugated anti-Rabbit IgG should be diluted in 1: 50,000 - 100,000 as secondary antibody.

Comment: Target Species of Antibody: Human

Restrictions: For Research Use only

Handling

Format: Lyophilized

Reconstitution: Distilled water

Concentration: Lot specific

Buffer: Lyophilized from PBS with 2 % sucrose

Handling Advice: Avoid repeat freeze-thaw cycles.

Storage: 4 °C, -20 °C

Storage Comment: Long term: -20°C, the use of 50% glycerol is recommended if storing aliquots in -20°C for long term use (up to 1 year)

Short term (less than 1 week): 4°C. Avoid freeze-thaw cycles.

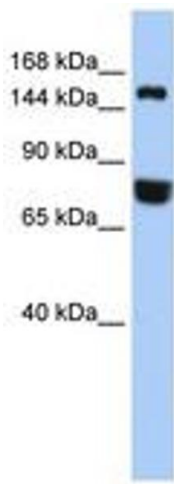


Image 1.