



[Go to Product page](#)

Datasheet for ABIN6744252
anti-PSMC3 antibody (AA 72-121)

1 Image

Overview

Quantity:	100 µL
Target:	PSMC3
Binding Specificity:	AA 72-121
Reactivity:	Human, Mouse, Rat, Xenopus laevis, Dog, Zebrafish (Danio rerio), Cow, Rabbit, Guinea Pig, Horse, Monkey, Chicken, Bat, Pig, Drosophila melanogaster
Host:	Rabbit
Clonality:	Polyclonal
Conjugate:	This PSMC3 antibody is un-conjugated
Application:	Western Blotting (WB)

Product Details

Immunogen:	Synthetic peptide located between aa72-121 of human PSMC3 (P17980, NP_002795). Percent identity by BLAST analysis: Human, Chimpanzee, Gorilla, Gibbon, Monkey, Marmoset, Mouse, Rat, Elephant, Dog, Bovine, Bat, Rabbit, Horse, Pig, Opossum, Guinea pig, Turkey, Chicken, Platypus, Lizard, Xenopus, Salmon, Stickleback, Medaka, Zebrafish, Blood fluke, Drosophila, Beetle (100%). Type of Immunogen: Synthetic peptide
Specificity:	Human PSMC3
Predicted Reactivity:	Percent identity by BLAST analysis: Human, Mouse, Rat, Dog, Bovine, Rabbit, Horse, Pig, Guinea pig, Chicken, Xenopus, Zebrafish (100%).

Product Details

Purification: Immunoaffinity purified

Target Details

Target: PSMC3

Alternative Name: PSMC3 / Rpt5 ([PSMC3 Products](#))

Background: Name/Gene ID: PSMC3
Family: ATPase

Synonyms: PSMC3, Proteasome subunit P50, TBP1, TBP-1, Rpt5, Tat-binding protein 1

Gene ID: 5702

NCBI Accession: [NP_002795](#)

UniProt: [P17980](#)

Pathways: [Mitotic G1-G1/S Phases](#), [DNA Replication](#), [Synthesis of DNA](#), [Ubiquitin Proteasome Pathway](#)

Application Details

Application Notes: Approved: WB (0.2 - 1 µg/mL)

Usage: Western Blot: Suggested dilution at 1 µg/mL in 5 % skim milk / PBS buffer, and HRP conjugated anti-Rabbit IgG should be diluted in 1: 50,000 - 100,000 as secondary antibody.

Comment: Target Species of Antibody: Human

Restrictions: For Research Use only

Handling

Format: Lyophilized

Reconstitution: Distilled water

Concentration: Lot specific

Buffer: Lyophilized from PBS with 2 % sucrose

Handling Advice: Avoid repeat freeze-thaw cycles.

Storage: 4 °C, -20 °C

Storage Comment: Long term: -20°C, the use of 50% glycerol is recommended if storing aliquots in -20°C for long

Handling

term use (up to 1 year)

Short term (less than 1 week): 4°C. Avoid freeze-thaw cycles.

Images

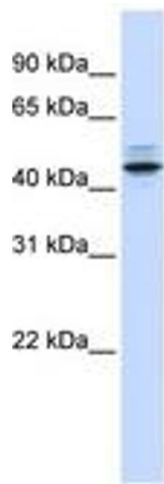


Image 1.